



2022 REPORT TO THE COMMUNITY





UNITED WAY OF
GREATER NEW BEDFORD
MOBILIZES PEOPLE,
PARTNERSHIPS,
AND RESOURCES TO
CATALYZE CHANGE THAT
STRENGTHENS THE
COMMUNITIES
WE SERVE.

OUR VALUES

IMPACT-DRIVEN

We work strategically to strengthen the region by responding to community needs and evaluating the programs we run and support to ensure we have impact.

INTEGRITY

We conduct our work as a funder, convener, and direct service provider openly, honestly, and fairly.

COMPASSION

We conduct our work with great care and empathy towards those we are serving.

INCLUSIVE

We value the perspectives of people from different backgrounds, experiences, races, ethnicities, and cultures.

COLLABORATION

We work together with organizations and individuals from across the region to ensure we have the greatest impact.

INNOVATION

We create transformative approaches as a fundraiser, funder, convener, partner, and service provider that enable us to be increasingly effective and efficient.

LEADERSHIP

We serve as a partner on important issues and aim to inspire others to become more involved to create a stronger region.

SERVICE AREA

Acushnet, Dartmouth, Fairhaven, Freetown, Marion, Mattapoisett, New Bedford, Rochester, and Wareham.

A MESSAGE FROM THE PRESIDENT & CHAIR



Michelle N. Hantman & Roland A. Giroux

This year's annual report honors the people of United Way of Greater New Bedford: the volunteers, employees, and partners who help us create a more robust community by ensuring that our neighbors get the help they need.

You will meet individuals who tutor foster children, make buildings more accessible with ramps created from Legos, and collect books so that every child can learn the joys and reap the advantages of reading. Some benefited from United Way programs and now are helping others. We are grateful to all of them.

Over the past year, we have made some changes to refine our focus. This realignment allows the United Way to concentrate on three key areas that reflect our basic mission, Safe Children and Strong Families, Meeting Basic Needs, and Ensuring a Bright Start.

These interlocking priorities strengthen the safety net for local families, giving children the chance to thrive and prosper that they deserve, no matter their start in life. By dedicating our energy and resources on these priorities, we align our work as a program provider and funder, fortifying our impact.

Community level challenges aren't solved one nonprofit at a time. United Way is strategic. We know that no one organization working alone can address huge issues like poverty, child abuse and food insecurity. Our many partners in the community, including businesses, individuals, and municipal leaders, as well as other social service organizations and state agencies, are vital to the work we are able to accomplish. Together, we create a community safety net that no single organization could create on its own.

We are grateful to every person mentioned in this publication, as well as the many, many people we could not mention, for their dedication, talent, creativity and generosity — as well as for the faith they place in us to improve people's lives.

Needs change, crises emerge and challenges evolve, but we are proud that United Way of Greater New Bedford is a constant, always here and always ready to help those in need.

Thanks for your support. We could not do it without you.

A handwritten signature of Michelle N. Hantman in black ink.

Michelle N. Hantman
President & CEO
United Way of Greater New Bedford

A handwritten signature of Roland A. Giroux in black ink.

Roland A. Giroux, ESQ
EVP, Chief Legal officer and Corporate Secretary,
Acushnet Company
Board Chair, United Way of Greater New Bedford



SAFE CHILDREN AND STRONG FAMILIES

All children deserve to grow up in a supportive, loving home. This is critical if we wish for every child to achieve their full potential. United Way leads and supports various programs that aim to reduce child abuse and neglect.

Research shows that parents and caregivers who have support—from family, friends, neighbors, and their communities—are more likely to provide safe and healthy homes for their children. When parents lack this support or feel isolated, they may be more likely to make poor

decisions that can lead to neglect or abuse. -United States Department of Health and Human Services, Children’s Bureau

United Way supports:

- Parenting education and engagement
- Caregiver Support Groups
- Family- School Partnerships
- Afterschool and summer programming

THIS YEAR, WE AWARDED COMMUNITY IMPACT GRANTS TO THE FOLLOWING ORGANIZATIONS FOCUSED ON SAFE CHILDREN AND STRONG FAMILIES.

SAFE CHILDREN & STRONG FAMILIES		
Boys & Girls Club of Greater New Bedford	After school/summer program	\$25,000
Child & Family Services, Inc.	Caring Network	\$20,000
Children’s Advocacy Center of Bristol county, a program of JRI and Strong Families	Healing & Resiliency Program (HARP)	\$25,000
Coaching4Change	Coaching4Change School Based Mentoring	\$15,000
Dennison Memorial Community Center	Academic Excellence Program	\$25,000
Our Sisters’ School	Supporting Students for Academic and Life Success	\$15,000
YMCA Southcoast	Summer Learning Enrichment program	\$25,000
YWCA Southeastern Massachusetts	YWkids	\$25,000





A member of the Family Center team engaging with a young girl at a recent event.

A mother received help, now she wants to help others

Maria Soltren was struggling in her relationship with her youngest daughter when she found the Family Resource and Development Center.

There, her daughter, 17, learned about YouthBuild New Bedford at PACE, where she has enrolled in a GED program and is learning job skills. And Soltren learned that she could improve her ability to listen and communicate.

"We don't always think about sitting and listening," she said. "I know it from experience."

Today, this New Bedford mother of three is training to work with the center as an AmeriCorps member, and will help coach other parents to develop nurturing relationships with their children. A Puerto Rican who came to New Bedford when she was 12 years old, Soltren especially wants to assist Latino families.

"The FRDC helped me a lot, and I hope I can help other families," she said. "A lot of us struggle more with teenagers these days."

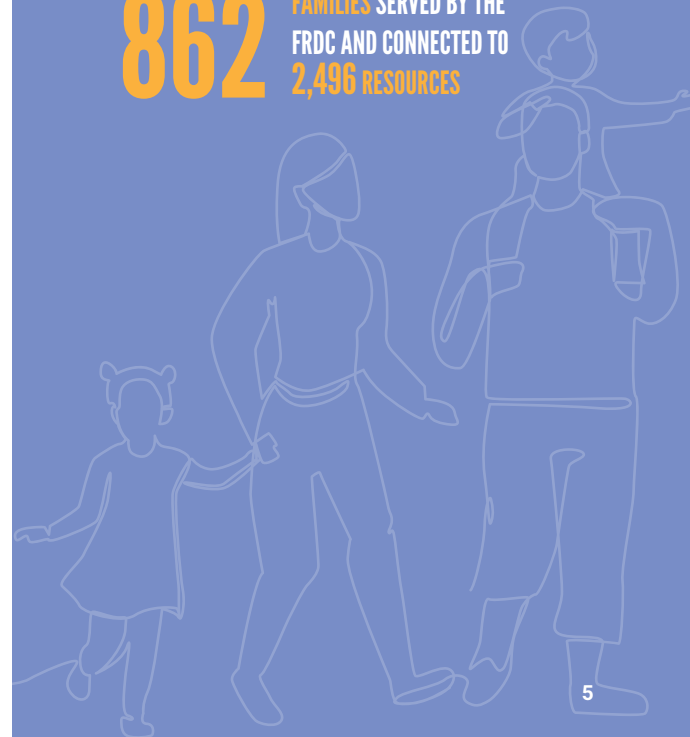
Soltren's family is one of many families who utilize the FRDC. The FRDC supports caregivers with children from birth to 18 with services and resources that promote self-sufficiency, strengthen family bonds, and tighten children's connections with their community.

FRDC FAMILY RESOURCE & DEVELOPMENT CENTER

343 NEW FAMILIES
REFERRED TO
THE FRDC

1,154 RESIDENTS ATTENDED
EVIDENCE-BASED PRACTICE
GROUPS AND OTHER EVENTS
AT THE FRDC

862 FAMILIES SERVED BY THE
FRDC AND CONNECTED TO
2,496 RESOURCES



AMERICORPS



AmeriCorps



MASSACHUSETTS
SERVICE ALLIANCE



"I have made an impact within the families I have worked with recently in the past few months by allowing them to have activities to do together as a family and build social connection while times are hard during this pandemic."

— AMY, AMERICORPS MEMBER

33 PARENTS COMPLETED THE NUTURING
SKILLS FOR FAMILIES PROGRAM

7,000+ HOURS OF NATIONAL
SERVICE PROVIDED

59 PARENTS RECEIVED SUPPORT
THROUGH PROGRAMMING

An AmeriCorps volunteer helps promote Safe Children and Strong Families

Amy Pimentel is completing a degree in social work at Bridgewater State University, while earning real life experience with the New Bedford Community Connections Coalition.

She is one of four AmeriCorps members who work as parent educators with The New Bedford Strengthening Families AmeriCorps Program. Trained through the Nurturing Parenting Program, she teaches the principles of effective parenting through Nurturing Skills for Families lessons, where parents can share their challenges and experiences in an informal setting, and supports those lessons with a variety activities for families.

The Coalition and the program are key parts of the UWGNB's focus on Safe Children and Strong Families.

Pimentel enjoys sharing what she has learned while also offering families a chance to socialize and have fun at events such as

Halloween, Christmas and Valentine's Day celebrations. She also connects families with resources and helps ensure they have cribs and other items they need to care for their children.

She first came to the Coalition as a student intern from Bristol Community College, where she studied human services. Raised in New Bedford, she wants to stay in the area and work as a social worker when she graduates with her bachelor's degree in the spring.

"I like investing in my community and I like working with families," she said. "A lot of the times, families might not have the resources they need. And there is always room for learning how to be a better parent."

The New Bedford Strengthening Families AmeriCorps Program is supported in part by the Massachusetts Service Alliance.



Young mother poses with a new car seat she received from attending a car seat safety session hosted by NBCCC.



NBCCC

Gouveia helps foster children succeed in the classroom

Educator Elizabeth Gouveia believes that school should be a bright spot for foster children, but too often it is another cause for anxiety for young people already burdened with stress and uncertainty.

"It's often not easy for foster kids in the classroom," said the in-house academic support professional. "They've seen a lot of transitions happening in their lives, and they can get lost in the shuffle."

Gouveia works to remedy that with weekly one-on-one tutoring for foster children in grades 1 through 8. The program is part of Partners for Foster Care Support, an initiative of New Bedford Community Connections Coalition (NBCCC).

Gouveia meets weekly with students at DCF's New Bedford offices, where she focuses on literacy, math, and social skills. As someone who holds a master's of education in arts-based learning, she also ensures that students have fun with crafts and expressive arts.

Several students have taken advantage of the program since it started in March. One student completed a backlog of make-up work and earned the grades to qualify for a school trip to Canobie Lake Park. Another raised her grades by at least a point in every subject area.

"She was so proud of herself," Gouveia said. "There are some black and white ways to assess improvement, but not all the successes are quantitative."

Not only does NBCCC support programming for foster children, but they also provide a number of workshops, groups, and parent cafes to share and teach parents about different topics including car seat and vaccine safety. All of the work done by NBCCC works to prevent child abuse and neglect, strengthen families, and build healthier communities.

1,200

APPROXIMATELY 1,200 FAMILIES/
INDIVIDUALS RECEIVED SUPPORT
THROUGH COLLABORATION AND
COALITION EFFORTS

MEETING BASIC NEEDS

Creating opportunities for better lives often starts by addressing basic needs. United Way strives to support people as they journey toward financial independence. Many events can hurtle an individual or family into crisis, from a job loss or illness to the breakup of a relationship.

People living in financially unstable homes frequently encounter other foundational quality-of-life needs, such as good health and nutrition. Without a stable and family-sustaining income, people can find themselves falling behind rather than moving forward in creating a good quality of life.

United Way supports:

- Access to adequate, nutritious, and culturally appropriate foods
- Housing stability
- Health Services
- Financial Literacy and free tax prep
- Access to prescription drugs
- Support for recovery from addiction
- Paths to stability for domestic violence survivors
- Adult literacy and vocational skills training

THIS YEAR, WE AWARDED COMMUNITY IMPACT GRANTS TO THE FOLLOWING ORGANIZATIONS FOCUSED ON MEETING BASIC NEEDS.

MEETING BASIC NEEDS		
CEDC	VITA-Free Tax Preparation	\$25,000
Damien's Place	Addressing Hunger One Step at a Time	\$25,000
Greater New Bedford Adult Day Health	Greater New Bedford Adult Day Health Care Center	\$15,000
Health Imperatives	New Bedford Sexual and Reproductive Health Clinic	\$25,000
Immigrants' Assistance Center	Citizenship and Financial Stability for Immigrants	\$25,000
P.A.C.E.	P.A.C.E. YouthBuild New Bedford (Blueprint to Financial Literacy)	\$20,000
Portuguese United for Education	English Literacy for Young English Learners	\$15,000
Southcoast LGBTQ Network	Elevate LGBTQ+ Youth	\$25,000
Steppingstone Incorporated	New Bedford Women's Graduate Program	\$15,000
Turning Point	Turning Point Day Resource Center	\$15,000





The Hunger Commission picks up food drives throughout the region to help with food insecurity.

United Way's community partnerships

The Hunger Commission provides food and logistical support free of charge to programs that support families and individuals in need. Program partners include established pantries, shelters, soup kitchens, and Council on Aging centers.

Through partnerships with companies like Blount and Sid Wainer & Son, the Hunger Commission is able to deliver supplemental food to local programs. The Hunger Commission continues to partner with Sharing the Harvest Community Farm, a program of YMCA Southcoast Dartmouth. Each year, they produce over 50,000 pounds of fresh fruits and vegetables that the Hunger Commission delivers to increase more access to healthy food options.

We are a proud member of the Southcoast Food Policy Council led by the Marion Institute. Through monthly meetings and work groups, United Way is working with many other nonprofits, growers, policy makers, and residents in order to make impactful and lasting change for those struggling with food insecurity.

HUNGER COMMISSION

29 FOOD ORGANIZATIONS
RECEIVED FOOD FROM THE
HUNGER COMMISSION

431,320 lbs.
OF FOOD WAS DISTRIBUTED THROUGHOUT THE SOUTHCOAST

The Hunger Commission truck delivers hundreds of thousands of pounds of food throughout the region each year.



HOLIDAY INITIATIVES

A Mini Miracle in Greater New Bedford

The Mini Miracle program made the New Year a little brighter for the DaSilva family, as they struggled to support the special needs of three-year-old Talia.

Talia, the youngest daughter of Thomas and Kathryn DaSilva, of New Bedford, was born with a rare genetic disease. She is unable to walk and experiences muscle cramping, seizures and circulation problems. She also has a high risk of aneurysm and stroke, and faces the possibility of blindness in the future.

Businesses and individuals responded with impressive generosity when WBSM, a Mini Miracle partner, broadcast the DaSilva's story at the holidays. Cardi's Furniture and Mattresses donated a special bed and the Team Noah Foundation built a wheel chair ramp outside the family's home. The DaSilvas also received a swivel adaptable car seat, a computer tablet to guide Talia's learning and payments for two months of gas, electric, and insurance bills.

The Mini Miracle is just one of United Way of Greater New Bedford's holiday programs. Hunger Heroes supplies Thanksgiving dinner ingredients for families in need. A partnership with the New Bedford Fire Fighters Union collects thousands of toys for community partners to distribute. And Holiday Wishes, another program with Fun 107 and WBSM, assists multiple families in the New Bedford area.



It's something we didn't expect and it was very, very helpful to us," Kathryn DaSilva said through tears. "We are very, very grateful to everyone who donated. We continue to enjoy our little nugget and hopefully will get to spend more time at home with her."

— KATHRYN, HOLIDAY WISH RECIPIENT



New Bedford Fire Department partners to collect thousands of toys for local children.

6 HOLIDAY
WISHES
GRANTED

OVER 2,000

TOYS COLLECTED AND DISTRIBUTED
IN GREATER NEW BEDFORD



This year United Way also launched the Holidays United Fund to provide other organizations funds to support holiday programming.

\$21,577 WAS GRANTED TO
13 ORGANIZATIONS

Damien's Place
Harbour House Family Center
Health Imperatives
Immigrants' Assistance Center
Kennedy Donovan Center El
MOLIFE
NorthStar Learning Centers

Old Bedford Village Development
P.A.C.E.
SEMCOA
South Coast LGBTQ Network
St Anthony of Padua Food Pantry
YWCA Southeastern
Massachusetts

MASS 211 & SINGLE CARE EMERGING NEEDS



MASS 211

Mass 211 is a free, confidential, referral hotline that connects residents to local information on critical health and human services. Mass 211 can be accessed 24 hours a day, 7 days a week in over 150 languages by simply dialing 2-1-1 or visiting mass211.org.

Mass 211 is also the home of Call2Talk, a mental health, emotional support, and suicide prevention program. Call2Talk is a National Suicide Prevention Lifeline Crisis Center and partners with Crisis Text Line to respond to people by text. Call2Talk can be reached by dialing 211 or 988, which was recently established as an easier way for people to be connected with crisis support nationally.

211 is made possible by local United Ways and the state of Massachusetts.



SingleCare

SingleCare, is a free tool that provides cost savings on prescription medication to those uninsured or underinsured throughout the United States. Families and individuals can save up to 80% on their medication and can find the best price using an online tool to compare medication costs at participating pharmacies.

Free SingleCare cards can be obtained at unitedwayofgnb.org/singlecare.

SingleCare is a national partnership with United Way.

\$548,257

SAVED BY GREATER NEW BEDFORD
RESIDENTS USING SINGLECARE

7,220

CALLS MADE LOCALLY TO 211



Emerging Needs & Opportunities Fund

The Emerging Needs and Opportunities Fund allows United Way to be agile and ready to respond to unexpected and time sensitive community needs – whether it is to support a recent emergency or to help bring a new program to the community that will have significant social impact. This year we awarded nearly \$12,000 through this fund.

We were able to support the YMCA Southcoast Dartmouth quickly when the refrigeration let go for Sharing the Harvest Community Farm. The cooler is vital to our partnership and we didn't hesitate to respond.

We also supported a regional Gun Give Back program in partnership with the University of Massachusetts Dartmouth and local law enforcement.

United Way also continues to fund the Street Sheet, which is an essential resource for homeless individuals or those at risk of becoming homeless. It provides free information on health and mental health care, legal assistance, Veteran's assistance, food pantries, emergency shelters, foreclosure assistance, substance abuse, and more. The Street Sheet is available in multiple languages and is considered a go-to resource for many people and organizations looking to refer people in need to services.



ENSURING A BRIGHT START

A child's first five years of life are the most critical time for brain development, but 33 percent of Massachusetts children enter kindergarten unprepared to learn. All children have the potential to succeed in school and in life, but not all children have the same opportunities to realize that potential. Many children lack important support that prepares them for school and academic success. Without it, these children can quickly fall behind and often never catch up. Unless they can read at grade level by third grade, they're four times less likely to graduate from high school.

Lower income parents, especially those who speak little or no English, have limited education or are unfamiliar with the culture, often feel incapable of participating in their children's education. They depend on the public schools as the sole educator of their children. The unfortunate result is that children from these homes often start school one or two years developmentally behind their higher-income peers.

Helping parents succeed as their child's first, best teachers is central. Parents and caregivers need tools and resources to support their children's education, development, and well-being.

United Way supports:

- Access to quality childcare and early education
- Early Intervention Assessment
- Kindergarten readiness
- Early childhood literacy
- Social-emotional learning opportunities

THIS YEAR, WE AWARDED COMMUNITY IMPACT GRANTS TO THE FOLLOWING ORGANIZATIONS FOCUSED ON ENSURING A BRIGHT START.

ENSURING A BRIGHT START

Meeting Street Massachusetts	Meeting Street Early Intervention	\$15,000
New Bedford Art Museum (NBAM)	Early Literacy Through the Arts	\$10,000
North Star Learning Center, Inc.	The Basics Southcoast	\$20,000
P.A.C.E.	P.A.C.E. Headstart	\$25,000

WOMEN UNITED



A busy executive helps power a better community with Women United

Rosemary Neto Hazzard’s immigrant father inspired her desire to give back to the community, and volunteering with Women United gives her the perfect outlet for her commitment.

“I like to work with women and being with like-minded women,” said Hazzard, president of Neto Insurance Agency. “We’re all in this together to help those who need it most.”

Last year, Hazzard helped Women United gather children’s books to distribute through Wash & Read, an initiative of Women United and hosts kids’ reading corners in laundromats locations in New Bedford and Dartmouth. She sees the group’s focus on early childhood development and literacy as an investment in our community’s future.

“If we can start when children are young, we can strengthen them to be better citizens and better people,” she said.

Women United’s popular Power of the Purse event helps support their initiatives. In addition to Wash & Read, the programs include Baby Bundles, providing bibs, bottles, and other newborn essentials to new moms in need, and Bright by Text, which delivers parenting advice and information on local events and activities to parent and caregiver phones.

“I like helping to support moms and their families because it does take a village,” she said. “You can’t do it alone.”

A growing movement on a mission to positively impact women and children in the Southcoast through targeted investment, unique initiatives, and a focus on women empowerment.

The Women United Leadership Council an advisory body providing leadership and strategic recommendations to United Way of Greater New Bedford’s Women United initiative.

INAUGURAL MEMBERS

- STARLENE ALVES | Partner, Alves | Santos PC
- CHERYL BARTLETT | CEO, Greater New Bedford Community Health Center
- KATE CARNEY | Trustee, Carney Family Charitable Foundation
- JENNIFER DOWNING | Executive Director, New Bedford Ocean Cluster
- BETH MCDERMOTT | Vice President of Advancement, Buzzards Bay Coalition
- JILL SIMOES | Healthcare Industry Executive (Retired)



Rosemary Neto Hazzard



WOMEN UNITED MEMBERS

- | | | |
|--------------------|-----------------------|---------------------|
| Starlene Alves | Jennifer Dubois | Beth E. McDermott |
| Sarah Barboza | Deidre A. Fountain | Nancy McFadden |
| Cheryl Bartlett | Michelle N. Hantman | Paula Montgomery |
| Marlissa Brigggett | Rosemary Neto Hazzard | Carolyn Pontes |
| Kate Carney | Wendy Joblon | Andrea Rodrigues |
| Elizabeth Craig | Sarah E. Korolnek | Jennifer St. Pierre |
| Jennifer Downing | | Anne Tangen |

The Power is in the Purse!

Since launching our **Women United** initiative in 2018, we've been on a mission to tap into the collective power of **women to create positive change!**

Power of the Purse
\$335,000+
RAISED



Our signature event to support Women United initiatives

Wash & Read

5,613 BOOKS

Placed in the hands of children and families by meeting them where they are



Baby Bundles

500



Supporting new moms by providing carefully packaged Baby Bundles with newborn essentials

Bright by Text

969 subscribers



66,000+ unique text messages with expert parenting tips and resources shared through Bright by Text

POWER OF THE PURSE

Women United's signature event, Power of the Purse, brings women together for a fabulous night, in support of our Women United initiatives focused on early childhood development and early literacy. This year's 5th annual event was the most successful one to date and left women talking long after the event finished. Power of the Purse was named the Best of the SouthCoast's Gala by readers of the South Coast Almanac. This year's lead sponsor was by BayCoast Bank.



NEW BEDFORD SHANNON AND SSYI

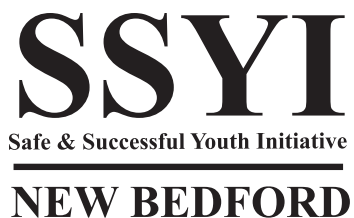
Over the past year, we have worked to refine our focus in order to engage more deeply with our major priorities. For that reason, we transferred the management of two programs for at-risk youth to NorthStar Learning Centers. We had run the New Bedford Shannon program and the Safe and Successful Youth Initiative for five years, placing them on a solid footing, expanding the number of youth served and increasing funding by 240 percent. Despite those successes, we recognized that the programs fit better with NorthStar.

The goal of New Bedford Shannon is to prevent the onset or further escalation of gang involvement and serious delinquency in New Bedford among moderate and high-risk youth. Youth can be referred to the Shannon program by the Department of Youth Services, the courts, schools, law enforcement and other providers.

The Safe and Successful Youth Initiative serves young adults ages 17-24 who police have identified as gang-involved, perpetrators of

weapons offenses or engaged in frequent illegal activity. It offers street outreach and engagement, behavioral health assessment and support, education, job readiness training and career planning, and help with housing or child care to assist its clients in building successful and productive lives.

New Bedford Shannon and SSYI programs will continue operating out of their current locations in New Bedford at their respective locations on Nash Road and Purchase Street. But with the administrative transfer, the programs will greatly benefit from working closer and more collaboratively with NorthStar's Heal Center, which works with youth ages 17-24 who have been exposed to gun violence. The center is supported by the Massachusetts Department of Public Health Gun Violence Prevention Intervention, Treatment and Recovery Services.





Zane's Ramps works to make local businesses more accessible for residents.

CHANGEMAKER GRANTS

Changemaker Grants open doors, enrich lives

Alissa DeSousa of Zane's Ramps, is eliminating barriers for physically disabled people in the New Bedford area — one Lego ramp at a time.

DeSousa's young son, Zane, is confined to a wheelchair by an undiagnosed illness he has had since birth, and that made her notice all the physical barriers that would limit him in the future.

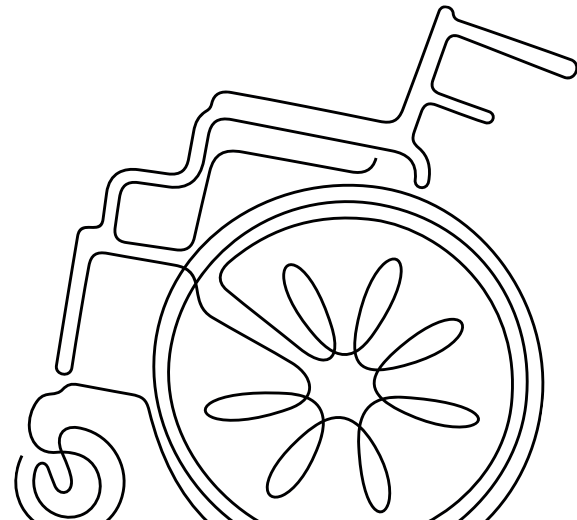
"Plenty of buildings in our area are not handicap accessible because the law states that businesses and non-profit organizations that serve the public must remove architectural barriers (only) when it is 'readily achievable,'" she said in an interview with WBSM.

So DeSousa founded Zane's Ramps to custom-build ramps from Legos. By applying for a Changemaker Grant, they were able to purchase additional Lego plates, glue, and other components of the ramps. Since its founding in 2020, the project has donated several ramps to businesses and homes in the region.

"The cool thing about the Lego ramps are that they are colorful and they start a conversation," Alissa said. "So it helps people get into places, and it creates the conversation about the need for additional accessibility."

Until last year, the Changemaker Grants were called the Community Building Mini-Grants. The program's mission is the same, but the new name better reflects the catalysts for change that the grants support. These grants are awarded to all-volunteer groups with big ideas to help their communities.

"The application is easy; it's simple and online," DeSousa said. "And we're very grateful to be selected."



2022 Changemaker Grant Recipients

BuyBlackNB	Southcoast Condo Community Garden
Grow Greater New Bedford	Swifts Beach Improvement Association
Dartmouth Mom's Group	The Friends of the Cape Verdean Cultural Committee
Friends of DAV	Village Hoops
GNB C.A.R.E.S.	West End Neighborhood Association
Hayden McFadden Garden Club	Zane's Ramps
New Bedford Rowing Center, Inc. (NBRC)	
Operation Clean Sweep	

VOLUNTEERISM

Two or three days a week, Will Coleman heads to United Way of Greater New Bedford and climbs into the Hunger Commission truck. He heads out on the road with the United Way team to pick up food and distribute it to the region's food pantries, soup kitchens, and Councils on Aging.

Will, who is 18 and an avid skier, says the work gives him a different kind of education than his classes at Old Rochester Regional High School, which awarded him academic credit for interning with United Way during his senior year.

"The people we get to meet, the stories we get to hear and the experiences we get to have — it's amazing," he said. "Every person you meet has a story, and the people they give food to have stories, as well."

A Rochester resident, Will got involved with United Way at the urging of his mother, Katherine Chmiel, who works as a mental health coordinator in the St. Luke's Hospital Emergency Department. She brought him along when she volunteered at a United Way Mobile Market, which distributes food in neighborhoods.

"I'm glad to be working for United Way because it has an impact on so many people," he said. "My mom instilled in me from a young age that volunteering is very important, that you don't have to get paid for every job you do. If you have the opportunity to volunteer and impact your community, you should do it."

Will was awarded the Spirit of Volunteerism Award from United Way and was since hired to continue to work with the Hunger Commission on a part-time basis.

United Way is committed to volunteerism in our region. Through Volunteer SouthCoast, volunteers are matched with opportunities to give back and hopefully find a meaningful experience like Will had.

In addition to matching volunteers, United Way works to help nonprofits expand their capacity, by partnering with the Massachusetts Service Alliance and Points of Light on the Service Enterprise Initiative. This past year, 3 organizations achieved Service Enterprise Certification with United Way's coaching. Congratulations to Family and Community Resources, P.A.C.E., and Samaritans SouthCoast.



Will Coleman works with former Hunger Commission Driver Terry Montgomery to pick up food drives this past spring.

**VOLUNTEER
SOUTHCOAST**
VOLUNTEERSOUTHCOAST.ORG



3,569 HOURS OF VOLUNTEER
SERVICE COMPLETED;
VALUED AT **\$106,891**

939 VOLUNTEERS WERE CONNECTED
WITH OPPORTUNITIES AT OTHER
ORGANIZATIONS THROUGH
VOLUNTEER SOUTHCOAST



Lisa, Elijah, and Malachi volunteer at Spring Hunger Heroes

United Way leads volunteerism and corporate social responsibility in the region

Over the past 8 years, volunteering with United Way has increased due to the additions of the Mobile Markets and Hunger Heroes Initiatives.

Mobile Markets, sponsored by BankFive and Southcoast Health, provide access to free, fresh produce in New Bedford and Wareham. Each year, over 100 volunteers work alongside UWGNB staff to distribute produce grown at Sharing the Harvest, a program of YMCA Southcoast Dartmouth. These markets provide food to over 4,000 households each year.

Hunger Heroes began with packaging 1,000 Thanksgiving meals and has since grown to include a Spring Edition to package 1,000 kid meal packs for kids to have over school vacation week. Prior to each Hunger Hero packaging event, United Way partners with Fun 107 and WBSM on the Hunger Heroes Food Drop and with 30+ businesses to collect food items needed.

Both events are highly sought-after opportunities due to their inclusive nature and encouragement for families to volunteer together.



Steph Pickup with her kids and Care Free crew at Hunger Heroes

"I enjoy volunteering at the Mobile Market because it gives me a sense of purpose. I've been very blessed. I look forward to contributing my time to a good cause - food security for those who need it during these difficult times. It's fun to meet new people every week and to work & chat with all the other friendly volunteers."

– Mary Redman

Mary Redman volunteers to distribute food at the Mobile Market



BUSINESS UNITED



The Business United Circle is a network of local businesses who unite to make a significant and lasting impact on their communities while inspiring others to follow their lead. Thank you to the following businesses:

HERO

BankNewport
Cape Building Systems
Coastal Financial
Feingold Bonnet-Hebert, P.C.
Long Built Homes
Southcoast Insurance Group
The Nery Corporation

CHAMPION

New Bedford Floor Covering Sales Co., Inc.

INVESTOR

Barnicoat Insurance of Acushnet, Inc.
Fernandes & Charest, P.C.
Guild Mortgage
Mamas & Babysitters
Nantucket Sound Seafood
Oceans Fleet Fisheries, Inc.
Philip G. David & Son Insurance Agency, Inc.
St. Michael's Federal Credit Union
Tetrault Insurance Agency
The Butcher Shop
Waring-Sullivan and Rock Funeral Homes



Members of United Way's Board at the Business United kick-off event.

"It has been a pleasure getting involved with United Way of Greater New Bedford. We've experienced first-hand the impact and importance the various programs have on the local community. We couldn't be prouder to be a part of it all."

Nick Daddona
Owner Southcoast Insurance Group



United Way 2022 Membership Requirements



All United Ways are separate, nonprofit corporations who raise funds for their local communities and are governed by local volunteers. To operate under the umbrella of United Way Worldwide, members must adhere to very strict membership requirements, including United Way Worldwide Standards of Excellence. These standards require local United Ways to submit detailed revenue and expense information yearly, plus an annual certification to very strict legal, governance, trademark, ethics, reporting, designation fee, and audit requirements.



Service Enterprise

United Way of Greater New Bedford was the first non-profit certified as a Service Enterprise on the SouthCoast. As a Service Enterprise, organizations are designated as the top 11% of non-profits in the country in volunteer management and organization performance.



Charity Navigator

The Four Star charity rating is the highest rating given by Charity Navigator and is determined by an organization's financial health, accountability, and transparency.

United Way of Greater New Bedford works to keep overhead administrative costs far below the Better Business Bureau's recommendation of up to 35% for non-profit organizations. Last year, our administrative costs were 16%.

IN-KIND GIVING

We thank the following businesses and organizations for donating products and services valued at \$1,000 and up to United Way over the past year.

Acushnet Company
Avalon Medical Spa
Big Value
Blount Fine Foods
Bombas
Brahmin Leather Works
B-Sharp Entertainment
Constantly Varied Gear (CVG)
Copicut Farm
Douglas Wine & Spirits / WS Retailers
Exquisite Events
Fiveway Foods
Flying Carrot Farm
Hannoush Jewelers
L'Oreal USA
Miranda Photo Co.
New Bedford Mitsubishi
Pidalia
Proactive Philanthropy
Reynolds DeWalt
Roti-Systems
Sharing the Harvest Community Farm, a program of the YMCA Southcoast Dartmouth
Sid Wainer & Son
Southcoast Behavioral Health Hospital
Table Talk Pies
Touch of Grace Florist & Gift Shop
Townsquare Media
Waterfront Cold Storage

GIVING COMMUNITIES

Our Giving Communities are networks of community minded individuals who are committed to investing in the health, education, financial stability, and basic needs in Greater New Bedford.



Women United



United Way of Greater New Bedford is grateful to the thousands of community members who support our work. Through their generosity, we positively impact the communities we serve.

A special thank you to our leadership donors, listed below, for their generosity and commitment to our mission.

ALEXIS DE TOCQUEVILLE SOCIETY \$10,000 +

Robert P. Clancy
Scott & Jennifer Dubois
Roland & Tracey Giroux
Seth & Beth Klarman
1 Anonymous Donor

ADMIRAL \$5,000-\$9,999

Dr. Joanne & Mr. David C. Cameron
Michael & Irene Davis
Marjorie & Nick Greville
Wendy & Ken Joblon
Ray Surprenant
Diana Tottenham

COMMODORE \$2,500-\$4,999

Dr. Paul Chervinsky
Michelle N. & Jason Hantman
Peter & Kristen Marshall
Elizabeth A. Nichols
Dolly & Steven Sharek
Jennifer St. Pierre

CAPTAIN \$1,500-\$2,499

Nicole Almeida
Faith Ball
Carolyn A. Burnham

Francine Ferguson
Donald M. Hartley
Michael & Susan Kramer
Willitts S. Mendonca
Andrew & Linda Quinn
Paul Renaud
Mark Silverstein
Vincent & Mary Sylvia

COMMANDER \$1,000-\$1,499

Starlene Alves
Maureen & Ray Armstrong
Ann M. Auger
Sarah Barboza
Julie Barcelos
Edward & Peggy Barry
Cheryl Bartlett
Heather Bonnet-Herbert
Glenn S. Booker
Marlissa Brigggett
Lisa & John Calnan
Kate Carney
Christopher Cassara
Jimmy S. Costa
Elizabeth Craig
Pamela J. Cruz
Jennifer Downing

William R. Eccles, Jr.
Marsha Fanucci
Monte Ferris, Jr.
Christopher Fortier
Dr. Anthony & Mary Ann Garro
Gendreau Family
Gladstone Family
Deidre A. Fountain
David A. Gomes
Michael & Judi Grimley
Rosemary Neto Hazzard
Christopher M. Hodgson & Lisa Sousa
Dr. Shanna Howell
Kathleen W. & Arthur J. Kelly, III
Michael Kelly
Sarah E. Korolnek
Brian LaFleur
Christopher A. Lindner
James N. Linhares
Attorney Kenneth Lipman
Robert F. & Christine Long
Stacie A. Long
Rosemarie Lopes
David E. Maher
Mark Mareiro

Beth E. McDermott
Jeff & Nicole Mello
Nancy McFadden
Paula Montgomery
Patrick J. Murphy
Aaron Novy
Jennifer H. Nugnes
Jennifer Olivier
Olivia & Trey Piepmeier
Carolyn Pontes
Maegan Powers
Andrea Rodrigues
Lisa & William Rogers
Jason & Christine Rua
Alan Sequeira
George E. & Natalie Sine
Ari & Eve Sky
Jacqueline Somerville
Andrew Springer
Carl & Natalie Taber
Anne Tangen
Sarah Wester
Tammy A. Williams
Melissa Wojnar
Gregory Yates
1 Anonymous Donor

We have made every effort to provide a complete and accurate report that recognizes all donors. If you note errors or omissions, please accept our sincere apologies and contact us.

IN MEMORY

Marc Allain
Stephen Ansay
Rae Blumberg
Mary Bossart
David & Ellie Cameron

Joseph & Olivia Deane
John Farrell
Francis Ferreira
Daniel & Adeline Gentile
Catherine Kronteres

Michael Murphy
Randi & Carly Pacheco
Maria N. Pavao
June Pina

Howard S. Pires
Richard T. Saunders
Natalia Silva
Robert C. Sylvia

IN HONOR

All Essential Workers
All of our dedicated City employees
Patricia Barkley

Joseph Barry
Patrick Barry
Meg Bradshaw and Family
Steven A. Cohen

Jarid DaCunha
Morgan Diaz
Victoria Grasele
Michelle N. Hantman

Eli Kanter
Stacie Long
The Ouellette Family
Tracy Vasconcelos

REMEMBERING



Orren Robbins

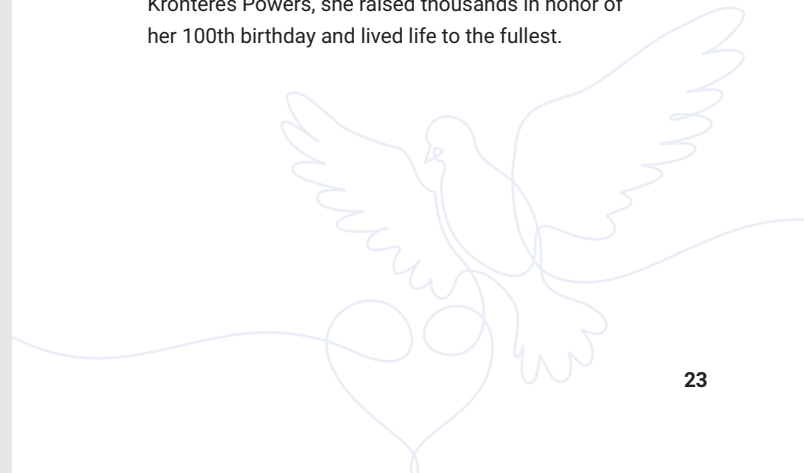
Orren was the former publisher of The Standard Times and retired Executive Director of Downtown New Bedford Inc. A long serving Rotarian, he devoted his life to giving back to the community and we were fortunate enough to have known him in many roles: a loyal donor and volunteer, former Campaign Chair and former Chair of the Board of Directors.

Orren was a special person with a warm smile and willingness to serve. We are all proud to have known him and so grateful for what he gave us – his time, his talent and his generosity...but most of all, his friendship. He will be missed.



Catherine Kronteres

This past year, we lost YiaYia (**Catherine Kronteres**), a beloved member of our United Way community. With the help of her granddaughter, Board member, Maegan Kronteres Powers, she raised thousands in honor of her 100th birthday and lived life to the fullest.



WORKPLACE CAMPAIGNS

Employees at companies of all sizes have the opportunity to make a difference in Greater New Bedford by making donations to United Way through employee giving campaigns. We thank each participating campaign for their support.

Acushnet Company
Aerovox Inc., Div. of Parallax Power Components
AFC Cable Systems
Alden Court Nursing Care & Rehabilitation Center
Alltrust
Ameriprise Financial Services
AT&T
ATI Flat Rolled Products
Babbitt Steam Specialty
Bank of America
BankFive
BayCoast Bank
Benco Dental Supply Company
Best Buy
Better Community Living
BMO Financial Group
Bristol County Savings Bank
Brittany Global Technologies
Brown Brothers Harriman
Child & Family Services
Citizens Financial Group DBA Citizens Bank
City of New Bedford
CliftonLarsonAllen LLP
Coastal Financial
Colonial Wholesale Beverage
Comcast Corporation
Cornell Dubilier Electronics

Costco
Davico Mfg.
Deloitte SPC
Dennison Memorial Community Center
Eastern Bank
Enterprise Rent-A-Car
Eversource
Exelon Corporation
Fisher & Rocha
Five Star Manufacturing
Five Star Surgical
Foth-CLE Engineering Group - MA & RI
Freetown-Lakeville Regional School District
Garmin International
General Dynamics
Greater New Bedford Regional Vocational -Technical High School
Hannaford National
High Point-SEMCOA
Illinois Tool Works
Immigrants' Assistance Center
Insight
JC Penney
John Hancock Financial Services
Johnson & Johnson Company
Joseph Abboud Mfg.
L.L. Bean
Lafrance Hospitality Company
LifeStream

Linberg Marine
Lockheed Martin
Lutron
Macy's
Maritime Terminal Inc.
MASSHIRE - Greater New Bedford Workforce Investment
McLaughlin Research Corporation
Meeting Street
Moore & Isherwood
NBCU (formerly New Bedford Credit Union)
New Bedford Housing Authority
New Bedford Medical Investors (Oaks Nursing Home)
Northern Trust Nat'l
Northstar Learning Centers
O'Reilly Auto Parts
Old Colony Regional Voc Tech HS
One SouthCoast Chamber
PAACA
PACE
Paychex
Precis
Princess House
Ricoh USA
Robertson's GMC
Rockland Trust Company
Rockwell Sales
Saint Anne's Hospital

Schaefer Marine
Seven Hills Behavioral Health
Shaws/Star Market
Skips Marine Supply
Southcoast Health
Southcoast Visiting Nurse Association
St. Anne's Credit Union
Steppingstone NB
Stop & Shop
Sylvia Group
TD Bank
The ARC Bristol County
The Women's Center
Town of Acushnet
Town of Dartmouth
Town of Fairhaven
Travelers
Tremblay's Bus Company
United Way of Greater New Bedford
UPS
Verizon
Walmart
Webster Bank
William Barnet & Son, LLC
YMCA Southcoast
YWCA of Southeastern Massachusetts
ZAPP Precision Strip Inc.

THANK YOU



"I was honored to support the team at United Way of Greater New Bedford as the Campaign Chair. I'm inspired by the work they do every day and was excited to lead the campaign to further the impact UW has in our region."

Nicole Almeida, 2021/2022 Campaign Chair

CORPORATE AND FOUNDATION

GIFTS, SPONSORSHIPS, AND OTHER SUPPORT

\$50,000 +

Acushnet Company
BayCoast Bank
City of New Bedford
Massachusetts Department of Children
& Families
Southcoast Community Foundation
- Acushnet Foundation Fund

\$25,000-\$49,999

BankFive
Eversource

\$10,000-\$24,999

Bank of America
Bristol County Savings Charitable
Foundation
Island Foundation
Move the World Foundation
Southcoast Health
St. Anne`s Credit Union
The Carney Family Charitable Foundation
The Manton Foundation

\$5,000-\$9,999

Bristol County Savings Bank
Davico Mfg.
SouthCoast Community Foundation
- BankFive Foundation Fund
- Hawthorn Medical Associates Charitable Fund
- Polaroid Fund
United Way of Mass Bay & Merrimack Valley
UPS
Sidney J. Weinberg, Jr. Foundation

\$2,500-\$4,999

Claremont Companies
Diana D`Agostine Designs
Excel Recycling
Folia
Loanscale
Milbury & Company LLC
Rockland Trust Company
Webster Bank

\$1,000-\$2,499

ATI Flat Rolled Products
Avalon Medical Spa
BASK
Bearingstar Insurance
Brahmin Leather Works
Care Free Homes
Citizens Charitable Foundation
Coastal Financial
Congregational Church of South Dartmouth
Cornell Dubilier Electronics
Demoulas Market Basket Foundation
East Bay Building & Remodeling
Guild Mortgage
Long Built Homes
McDonald`s - P & D Management Group
Milestone Mortgage Solutions
My Brother`s Keeper
Nordic
Norweb Foundation
P. J. Keating Co.
PricewaterhouseCoopers (PwC)
Souza Family Orthodontics
Stop & Shop
Sylvia Group
Town Fair Tire
Vermette Enterprises
Walmart Foundation
Walsh Title & Closing

BOARD OF DIRECTORS

ROLAND A. GIROUX, ESQ.

Acushnet Company
Chair

DR. SHANNA HOWELL, Ph.D

Bristol Community College
Vice Chair

JENNIFER OLIVIER, CPA

CliftonLarsonAllen LLP
Treasurer

JENNIFER ST. PIERRE, CPA

BankFive
Clerk

NICOLE ALMEIDA

BayCoast Bank

STARLENE ALVES, ESQ.

Alves/ Santos P.C.

HEATHER M. BONNET-HEBERT, ESQ.

Feingold Bonnet-Hebert, P.C.

FRANCINE FERGUSON

Bristol County Savings Bank

MONTE FERRIS JR.

RDA Insurance

CHRISTOPHER FORTIER, PHARM.D, FASHP

Massachusetts General
Hospital

DAVID GOMES, ESQ.

UMass Dartmouth

DONALD HARTLEY

Ocean Point Investment
Solutions

ROSEMARIE LOPES

Sylvia Group

MAEGAN POWERS

Summit Retail Solutions

JACQUELINE GANNON SOMERVILLE, Ph.D., RN

Southcoast Health

RAY SUPRENANT

Davico Manufacturing



"I believe in the United Way of Greater New Bedford because of the UW's expansive knowledge of our community, dedicated efforts to make lives better in the local area, to identify and target the greatest areas of need and to respond quickly and effectively in times of crisis."

– **ROLAND A. GIROUX, ESQ.**

Chair of the Board

STAFF

MICHELLE NEVES HANTMAN

President & CEO
mhantman@unitedwayofgnb.org

AMBER BATISTA

Family Support Worker
abatista@unitedwayofgnb.org

JENNIFER BATES, CPA

VP of Finance and Human
Resources
jbates@unitedwayofgnb.org

STANLEY BRAJER

Director of NBCCC
sbrajer@unitedwayofgnb.org

MAKIAH CHUMACK

Child & Family Services Clinician
mchumack@unitedwayofgnb.org

WILL COLEMAN

Hunger Commission Assistant
hungercommission@
unitedwayofgnb.org

KRISTINE A. CUNNINGHAM

Development Manager
kcunningham@unitedwayofgnb.org

MARIA DEMELO

School Liason
mdemelo@unitedwayofgnb.org

CARLA FERNANDES

Child & Family Services Family
Partner
cfernandes@unitedwayofgnb.org

SAVANNAH DUARTE

Family Advocate
sduarte@unitedwayofgnb.org

VICTORIA GRASELA

VP of Marketing & Community
Engagement
vgrasela@unitedwayofgnb.org

GRETCHEN HUBERT

Administrative Assistant
ghubert@unitedwayofgnb.org

NICOLE KELLY

FRDC Administrative Assistant
nkelly@unitedwayofgnb.org

PAULA MONTGOMERY

Women United Director
pmontgomery@unitedwayofgnb.org

KENDYLL RAMOS

NB Family Resource & Development
Center Program Director
kramos@unitedwayofgnb.org

EMMA RIVERA

Family Support Worker
erivera@unitedwayofgnb.org

TELMA ROSA-SILVA

Family Support Worker
tsilva@unitedwayofgnb.org

C. ALLEN TRUITT

AmeriCorps Program Manager
atruitt@unitedwayofgnb.org

**JOIN UNITED WAY OF GREATER NEW BEDFORD BY GIVING,
ADVOCATING, AND VOLUNTEERING BECAUSE...**

Everything we do is LOCAL.

A gift to United Way improves the conditions of
our entire community.

We stay up to date with our community's
changing needs.

Our strategies create the most direct results.

Together, we can do more and build a stronger
community where everyone can thrive.

**SUPPORT OUR WORK.
MAKE A DONATION TODAY.**



GIVE



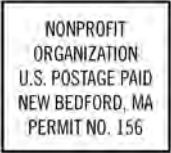
ADVOCATE



VOLUNTEER

UNITED WAY OF GREATER NEW BEDFORD

128 Union Street, Suite 105
New Bedford, MA 02740
Ph: 508-994-9625
Fax: 508-994-9667
info@unitedwayofgnb.org
unitedwayofgnb.org



Change Service Requested

CONNECT WITH US



@unitedwayofgnb