



REPORT TO THE COMMUNITY

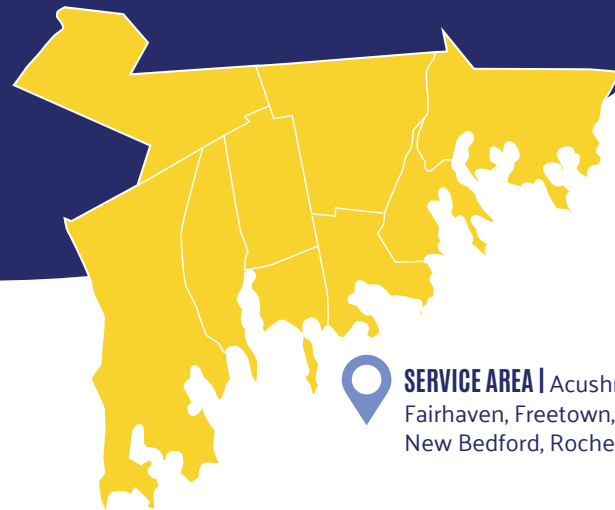
2024



UNITED WAY
Greater New Bedford

OUR MISSION

UNITED WAY OF GREATER
NEW BEDFORD MOBILIZES
PEOPLE, PARTNERSHIPS,
AND RESOURCES TO
CATALYZE CHANGE
THAT STRENGTHENS THE
COMMUNITIES
WE SERVE.



SERVICE AREA | Acushnet, Dartmouth,
Fairhaven, Freetown, Marion, Mattapoisett,
New Bedford, Rochester, and Wareham.

A MESSAGE FROM THE PRESIDENT & CHAIR

Thank you to everyone who has invested in our community through the United Way of Greater New Bedford. Whether you contributed financially, volunteered your time, or partnered with us, your support has truly made a difference. This year has been one of growth, program expansion, and deeper impact.

We are excited to share this year's Annual Report, marking a pivotal moment for our organization. It introduces our new five-year Strategic Plan, designed to evolve our mission and position us well for our 75th anniversary in 2028.

This report takes a fresh approach by using the Strategic Plan as a framework to highlight our key impact areas. Rather than providing a comprehensive catalog of our work, we'll showcase specific programs and partnerships that demonstrate our impact and illustrate our efforts within these areas.

Our economic and cultural landscape has changed profoundly in recent years, prompting us to rethink how we serve the community. This year, we expanded our economic mobility initiatives by dedicating additional resources and enhancing our infrastructure for greater impact. In addition to our grantmaking efforts, we launched two new programs focused on financial literacy. Our goal is to foster stability and upward mobility for the individuals and families we serve. We are proud to lead this multi-faceted approach to reduce poverty levels and address long-standing resource gaps, and we are already seeing positive results.

Our Strategic Plan is a crucial step toward our future success, ensuring we remain agile and prepared to build a stronger, more resilient community for all by meeting people's immediate needs and building pathways for a better tomorrow. As we look ahead, we invite you to partner with us and engage in our mission. Together, we will create lasting change and empower our community to thrive.

With gratitude,

Michelle N. Hantman
President & CEO
United Way of Greater New Bedford

Dr. Shanna Howell, PhD.
Vice Principal of Student Support Services,
Southeastern Regional Vocational Technical High School
Board Chair, United Way of Greater New Bedford

STRATEGIC PLAN 2024-2029

WE HAVE SET THREE GOALS

- 1** Establish measurable community impact strategies and collaborate with partners to catalyze equitable outcomes.
- 2** Leverage our unique role in the region to grow participation and support through proactive engagement with current and potential partners, donors, and volunteers.
- 3** Build our organizational strength and agility.



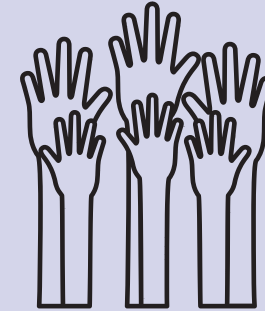
These goals are supported by four new impact areas to guide our work: Healthy Community, Youth Opportunity, Financial Security, and Community Resiliency.

We are committed to turning our strategies into concrete, measurable results that advance our mission. Collectively, our goals and impact areas for the coming years will maximize regional collaboration and harness the full spectrum of resources and capabilities that UWGNB brings to the community.

A YEAR IN NUMBERS



see our impact in action



3,901 Hours of volunteer service valued at **\$124,079**, were completed at United Way

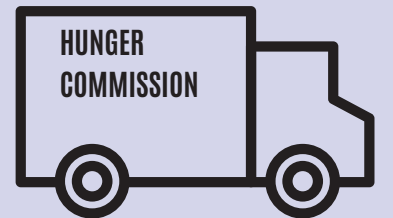


MOBILE MARKET
Served **664 households**

5,851 calls made to 211

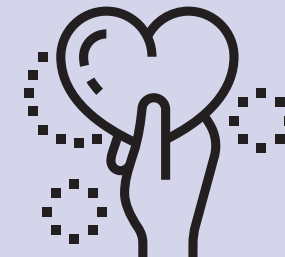
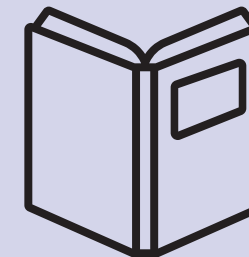


\$584,000 given in grants & other distributions



Delivered **354,021 lbs** of food

WASH & READ
1,731 books distributed



VOLUNTEER SOUTHCOAST
1,492 Volunteers connected with opportunities through VSC



HEALTHY COMMUNITY

IMPROVING HEALTH AND WELL-BEING FOR ALL.

Recent statewide assessments reveal that Bristol County faces the highest food insecurity rates in Massachusetts, with 48% of residents struggling to balance the cost of food with other essential expenses such as utilities, transportation, rent, and medical care. This issue is compounded by a severe shortage of mental health professionals, exacerbated by a lack of diversity and language skills within the sector. Additionally, the lingering effects of COVID-19 continue to impact individuals' mental well-being making our work more crucial than ever.

At United Way of Greater New Bedford, we recognize that meeting basic needs—such as housing, food,

clothing, and healthcare—is fundamental to a healthy life. Our commitment is to enhance access to resources and improve the well-being of individuals, families, and youth across the South Coast region.

OUR FOCUS INCLUDES:

- Nutrition & Food Security
- Mental Health
- Maternal & Child Health
- Substance Misuse

Source: 2024 Greater Boston Food Bank's Fourth Annual Statewide Report



PROGRAM HIGHLIGHT: HUNGER COMMISSION

For so many families, the cost of living has impacted daily life and forced residents to make tough decisions. At United Way of Greater New Bedford, we continue to increase access to basic needs to address critical local issues such as food insecurity. We distribute hundreds of thousands of pounds of food yearly to local food pantries, council on aging centers, and shelters throughout Greater New Bedford, Westport, and Fall River.

This year marks our 10th Mobile Market season in partnership with YMCA Southcoast Dartmouth,

Share the Harvest Farm. This program provides thousands of households with free, fresh produce in neighborhoods across the region. The goal of Mobile Market is to give working residents who are unable to visit a food pantry during the day access to healthy food options.

In addition, through a new partnership with Coastal Foodshed, more fresh produce is supplied to residents. Coastal Foodshed purchases locally sourced fresh and frozen fruit and vegetables, meat, eggs, dairy products, and honey that UWGNB delivers to local partners.

GRANTEE SPOTLIGHT

OUR SISTERS' SCHOOL AND NATIVITY PREPARATORY SCHOOL

Now, more than ever, students, especially those in middle school, need access to mental health support. With this in mind, United Way of Greater New Bedford has funded positions at both Our Sisters' School and Nativity Preparatory School to offer counseling services to students, provide critical guidance and orientation to faculty and staff to meet students needs, and also connect parents and families to resources and information that may help them address any challenges experienced outside of the school environment.





YOUTH OPPORTUNITY

HELPING YOUNG PEOPLE REALIZE THEIR FULL POTENTIAL.

The Greater New Bedford region is often described as a “child care desert,” marked by a critical shortage of quality childcare options. This shortage is reflected in notable gaps in preschool enrollment, particularly among different income levels and racial/ethnic groups. Expanding access to affordable, high-quality childcare is essential for supporting child development and enabling parents to fully participate in the workforce.

Beyond early childhood education and care, consistent participation in in-school, after-school, and summer learning programs is critical to student success. This is a focus of the federal “Improving Student Achievement Agenda” for 2024, which emphasizes the importance of these programs in helping students close achievement gaps and develop the skills necessary for lifelong success.

This national initiative reinforces what we see locally: high-quality learning opportunities are key to ensuring that every child can thrive in school and life.

United Way of Greater New Bedford believes that early education and in-school, after-school, and summer programs foster lifelong curiosity and long-term achievement. Our programs, funding, and advocacy are designed to enrich learning opportunities and help young people reach their full potential.

OUR FOCUS INCLUDES:

- Early Education and Childcare
- In-School, After-School & Summer Learning
- Literacy Development

Source: SouthCoast Community Foundation, Expanding Early Education and Childcare Opportunities, March 2022



PROGRAM HIGHLIGHT: COMMONWEALTH PRESCHOOL PARTNERSHIP INITIATIVE

The Department of Early Education and Care (EEC) funds districts across the state to develop partnerships between schools and local early education and care programs to expand access to preschool within the district. The program aims to provide 3- and 4-year-olds with equitable access to high-quality preschool while ensuring families have multiple provider options across public and community-based classrooms. This levels the playing field for kindergarten readiness, establishing a coordinated curriculum and similar goals regardless of where a child is enrolled.

United Ways throughout Massachusetts have been awarded an EEC grant to provide technical assistance and support to participating districts. United Way of Greater New Bedford serves as a community partner, building bridges to expand the scope of work in both New Bedford and Wareham. This has been particularly helpful as Wareham gets up and running, having just been awarded the grant in 2024, while New Bedford has participated since 2015.

GRANTEE SPOTLIGHT

COACHING4CHANGE

Coaching4Change partners with local school districts to provide extra support for high-need K-12 students by providing college mentors who encourage and assist local school children in succeeding academically and as individuals. By training and paying racially diverse college mentors to assist students in the classroom and after school, Coaching4Change supports school improvement initiatives by increasing student engagement and social-emotional learning. At the same time, mentors participate in professional development opportunities and networking events to help advance their career planning.





1. Coaching and Resource Access



- Free & Confidential
- Problem Solve
- Personal Goals
- Valuable Resources

FINANCIAL SECURITY

CREATING A STRONG FINANCIAL FUTURE FOR EVERY GENERATION.

The wage gap between our region and the rest of Massachusetts has widened over recent decades, with significant income disparities among racial and ethnic groups. Rising housing costs relative to wages are intensifying financial pressures, leading to potential displacement and economic instability.

Addressing these challenges requires targeted interventions and a focus on systemic issues. Research indicates that weak financial management and limited access to support systems often perpetuate the cycle of poverty.

To address this, United Way of Greater New Bedford provides resources, programming, and infrastructure to help residents – especially those in marginalized communities – build financial skills and improve economic mobility.

OUR FOCUS INCLUDES:

- Financial Education and Coaching
- Public Benefits Access
- Homelessness Prevention & Affordable Housing

Source: SouthCoast Health, Community Health Needs Assessment, 2022

UMass Boston, Latinas in Massachusetts: New Bedford, October 2022



PROGRAM HIGHLIGHT: FINANCIAL FUTURES & FINANCIAL WELLNESS AT WORK

United Way of Greater New Bedford expanded its financial security efforts by launching two new programs: Financial Wellness at Work and Financial Futures. Both programs are focused on improving residents' financial literacy and economic standing.

Financial Futures is a 12-week program through Womens Money Matters that provides coaching and curriculum geared to women who want to gain control over their finances, create a supportive community with other women, and transform their lives by learning core money management skills. Women United sponsors this initiative and recruits volunteer coaches and program participants.

Financial Wellness at Work embeds a United Way coordinator in the workplace to provide employees with one-on-one coaching, resource coordination, workshops that outline healthy financial habits,

and access to low-cost, small-dollar loans through Taunton Federal Credit Union to address short-term cash flow challenges and improve credit ratings.

In addition to these programs, funding for financial security initiatives has increased by 28% in 2024 through UWGNB's Community Impact grantmaking. In June, \$115,000 was awarded to four nonprofits that are also committed to improving financial security. Grants support tax preparation for low- and moderate-income residents, financial management for seniors, financial literacy courses for young adults working towards their high school equivalency diploma, and assistance with managing personal finances to obtain or maintain housing. UWGNB will continue to grow its investment in financial security-related endeavors, given how inextricably linked it is to combating poverty.

GRANTEE SPOTLIGHT

COMMUNITY ECONOMIC DEVELOPMENT CENTER

Community Economic Development Center (CEDC) manages the Volunteers in Tax Assistance (VITA) program, which provided free tax preparation for 1,412 households this year, resulting in 3.5 million dollars in total tax refunds. After the tax season, CEDC also acts as a resource, especially for non-English speaking people, to troubleshoot tax-related issues. UWGNB funds VITA and uses the service as a resource for both Financial Wellness at Work and Financial Futures programs.





COMMUNITY RESILIENCY

ADDRESSING URGENT NEEDS TODAY FOR A BETTER TOMORROW.

A significant percentage of children in our region are living in poverty, experiencing homelessness, or in foster care. In New Bedford alone, 1,277 students have been identified as homeless at some point this year, putting them at higher risk of dropping out and facing emotional and academic challenges.

Providing children with stable housing, a nurturing environment, and a quiet place to focus on their studies can dramatically change their futures, setting them on a path toward success. United Way of Greater New Bedford's Family Resource and Development Center and New Bedford Community Connections Coalition are committed

to supporting all families in building self-sufficiency, strengthening family bonds, and deepening family's connections to their community. By creating a healthy environment and equipping children with the tools to navigate and overcome life's difficulties, we help them build their resilience and prepare for future challenges.

OUR FOCUS INCLUDES:

- Child Abuse and Neglect Prevention
- Family Case Management
- Parent Education
- Safe Living Environments

Source: New Bedford Light, Record student homelessness requires creative new ideas. - Feb. 6, 2024



PROGRAM HIGHLIGHT: NEW BEDFORD FAMILY RESOURCE & DEVELOPMENT CENTER

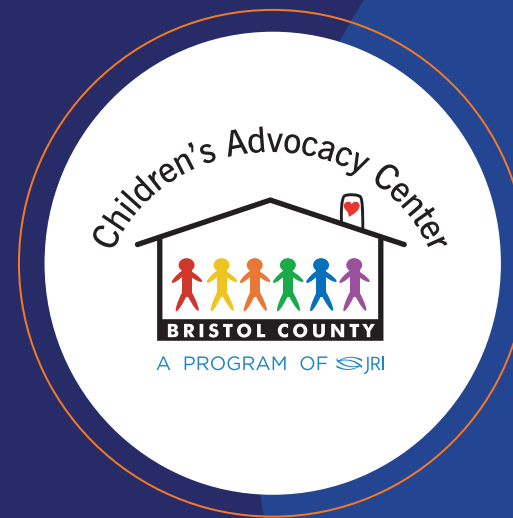
United Way of Greater New Bedford supports caregivers with services and resources through the New Bedford Family Resource and Development Center (FRDC). As part of this work, FRDC supports caregivers with children from birth to 18 with services and resources that promote self-sufficiency, strengthen family bonds, and tighten children's connections with their community. Family Support Workers connect families to community

resources such as housing needs, mental health access, childcare, food and other basic needs. FRDC also hosts a series of programs in partnership with the Department of Children & Families including Parenting Journey, Parents in Treatment and Recovery, Grandparents Raising Grandchildren, and Nurturing Fathers. These evidence-based programs promote loving and caring relationships, which greatly influence how well children learn and grow.

GRANTEE SPOTLIGHT

CHILDREN'S ADVOCACY CENTER OF BRISTOL COUNTY

Children's Advocacy Center of Bristol County (CAC) provides a coordinated response to disclosures and allegations of child sexual abuse, severe physical abuse, commercial sexual exploitation, and witness to violence. They help children and families heal from trauma and educate the community about prevention. Their Healing & Resiliency Program (HARP), creates a safe environment for survivors and their caregivers to process the impact of trauma and work towards reducing the likelihood of additional child abuse or neglect.



COMMUNITY IMPACT 2024 GRANTS

Caritas Communities	Resident Supportive Services Program in New Bedford	\$25,000
Child & Family Services	Caring Network	\$18,000
Children's Advocacy Center	Healing & Resiliency Program (HARP)	\$25,000
Coaching4Change	Near Peer Mentoring in New Bedford Schools	\$10,000
Coalition for Health Equity and Early Development	Weaving The Basics Southcoast into the role of a community health workers in health centers at WIC Sites.	\$10,000
Coastline Elderly Services	Money Management Program	\$25,000
Community Economic Development Center	VITA Free Tax Preparation	\$35,000
Damien's Place	Healthy Food Distribution	\$15,000
Dennison Memorial Community Center	Academic Excellence Program	\$20,000
Discovery Language Academy, Inc.	English Literacy ESL Youth Program	\$20,000
Health Imperatives	New Bedford Equity Now: Sexual and Reproductive Health Clinic	\$25,000
Herren Project	Recovery Scholarships and Coaching in Greater New Bedford	\$25,000
Meeting Street Massachusetts	Family Bridges	\$10,000
Nativity Preparatory School	Mental Health & Wellbeing @Nativity Prep	\$20,000
Our Sisters' School	Supporting Students for Academic and Life Success	\$20,000
PACE YouthBuild	PACE YouthBuild New Bedford	\$25,000
Steppingstone	New Bedford Women's Graduate Program	\$15,000
Turning Point	Roadmap to Financial Stability through Support and Education	\$25,000
Youth Opportunities Unlimited	Providing New Bedford Youth with Equitable Access to Nature Year-Round	\$22,000
YWCA Southeastern Massachusetts	YWkids School Age Child Care Program	\$25,000

TOTAL FUNDING: \$415,000

LEADING VOLUNTEERISM

United Way of Greater New Bedford is proud to lead volunteerism across our region. Whether it's mobilizing volunteers for our Days of Caring, Hunger Heroes, or our Mobile Markets, or supporting other nonprofits to recruit and match volunteers, we serve as the hub for community service. Our partnerships with corporations also strengthen employee engagement and corporate social responsibility efforts, ensuring that together, we drive meaningful impact. And year-round, thousands of residents find opportunities to give back with their time and talents to make a difference through Volunteer Southcoast.

Our comprehensive approach to volunteer engagement led to a significant achievement this past year: UWGNB earned national re-accreditation in strategic volunteer engagement from the Association of Leaders in Volunteer Engagement (ALIVE). This prestigious Service Enterprise accreditation is held by only the top 11 percent of nonprofits nationwide, recognizing excellence in volunteer management and organizational performance.

In addition, UWGNB channels the creativity and commitment of volunteers to address community challenges at the grassroots level through our Changemaker Grants, which are uniquely available to all-volunteer-led groups. These grants are the only local resource of their kind, providing vital support to volunteers working to create real change in their neighborhoods.



EVENTS



Hunger Heroes



Day of Caring



One SouthCoast Chamber Apex Award



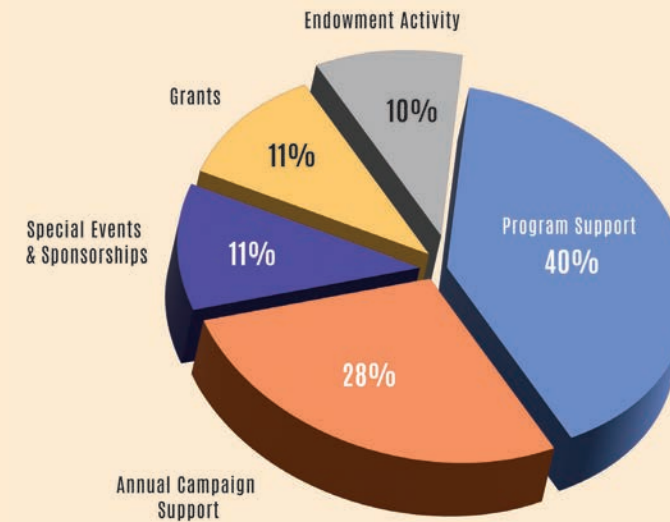
Autumn Soiree



Cisco's Christmas in July

FINANCIALS

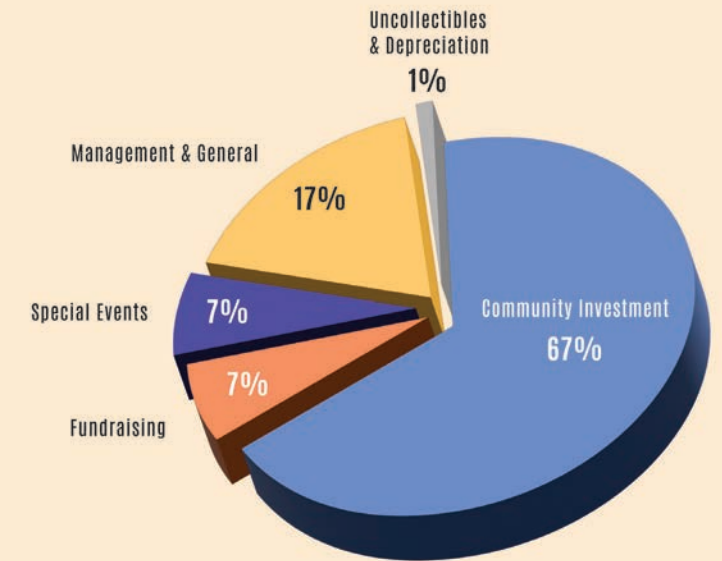
Sources of Operating Funds



Sources of Operating Funds

Program Support	\$1,343,359
Annual Campaign Support	\$932,833
Special Events & Sponsorships	\$385,108
Grants	\$356,566
Endowment Activity	\$334,473

Uses of Operating Funds



Uses of Operating Funds

Community Investment	\$1,991,763
Management & General	\$356,566
Fundraising	\$221,829
Special Events	\$221,123
Uncollectibles & Depreciation	\$37,980

United Way of Greater New Bedford keeps overhead administrative costs far below the Better Business Bureau's recommendation of up to 35% for nonprofit organizations. Last year, our administrative costs were 14%.

Please go to unitedwayofgnb.org for the complete audited financial statement.



GIVING COMMUNITIES

ALEXIS DE TOCQUEVILLE SOCIETY \$10,000 +

James S. & Joan Amaral
Robert P. Clancy
Roland & Tracey Giroux
Richard & Kathleen Strozky

ADMIRAL \$5,000-\$9,999

Michael K. Davis
Marjorie & Nick Greville
Elizabeth Weinberg Smith

COMMODORE \$2,500-\$4,999

Edward & Peggy Barry
Dr. Joanne D. Cameron
Dr. Paul Chervinsky
Michelle N.* & Jason Hantman

Donald M. Hartley
Peter & Kristen Marshall
Craig A. Mello
Elizabeth A. Nichols
Thomas L. & Jill M. Pappas

Dolly & Steven Sharek
Jennifer St. Pierre*
Ari & Eve Sky
Carl Taber
Jeffrey Wallace

CAPTAIN \$1,500-\$2,499

Nicole Almeida
Starlene Alves*
Maureen* & Ray Armstrong

Ann Auger
Carolyn & Chuck Burnham
Marsha Fanucci & Thomas Wolf
Francine Ferguson*
Christopher Fortier
Paula Freitas
Mary W. Harrington
Cindy Ko*
Michael & Susan Kramer
Stacie A. Long
Willitts S. Mendonca
Richard V. Poyant
Andrew D Quinn
Guelmie Santiago*
Mr. & Mrs. Mark Silverstein
Roy & Anne* Tangen

COMMANDER \$1,000-\$1,499

Patrick Arsenaull
Cheryl Bartlett*
Jason Beliveau
Sara P. Bennett
Glenn S. Booker
Nancy Braitmayer
Marlissa Brigggett* & Peter Necheles
Nancy Brown-Martins*
Peter & Erin Burlinson
David Cabral
Kate Carney*
Nicholas & Meg Christ
Christina R. Connelly*
Jimmy S. Costa

Elizabeth Craig*
Diana D'Agostine*
Morgan Diaz
Catherine Dillon
Mr. & Mrs. Donald Douglas
John & Zelinda Douhan
Neil & Jennifer* Downing
Ivis Espinoza*
David Ferreira
Diedre Fountain* & Warren Biss

Atty. David A. French, III
Monica A. Furtado
Dr. Anthony & Mary Ann Garro
Gendreau Family
Steve Gladstone
David A. Gomes
Margarita Graham*
Michael & Judi Grimley
Ryan Haskell
Rosemary Neto Hazzard*

Joanne Hudon
James & Dr. Bess Hughes
James S. & Maryellen Sullivan Hughes
Liz Isherwood*
Wendy Joblon*
Morris & Elizabeth Kellogg
Kathleen W. & Arthur J. Kelly, III
Sarah E. Korolnek*
Brian LaFleur
Leslie Lawrence*

Linley LePage*
Christopher A. Lindner
James N. Linhares
Atty. Kenneth Lipman
Rosemarie Lopes
David E. Maher
Kate Mahoney*
Beth E. McDermott*
Nancy McFadden*
Nicole Mello*
Carolyn Metivier*
Paula Montgomery*
Jennifer H. Nugnes
Jennifer Olivier
Matthew J. Payette
Sue & Maurice Pelletier
Michelle M. Pimentel
Carolyn Pontes*
Sara & Chris Quintal
Stuart Robertson
Andrea Rodrigues*
Linda Rodrigues
Lisa & William Rogers
Erick Rosa
Sarah Rose
Chris & Cecilia Ross
Jason & Christine Rua
Austin Seed
Jill Simoes*
George E. Sine
Dr. Jacqueline G. Somerville
Sean S. Sullivan
Nelson Tavares
Meena Theva
Tammy A. Williams
Melissa Wojnar

United Way was founded on the belief that everyone has the potential to be a philanthropist. Whether you contribute thousands of dollars annually or give just \$2 a week from your paycheck, your generosity fuels the collective power of United Way. Every gift, no matter the size, drives meaningful change in our community. Those who commit to an annual contribution of \$1,000 or more are recognized for their exceptional generosity and honored as leadership donors within our giving societies, exemplifying the spirit of community leadership.



United Way of Greater New Bedford's **Navigator Society** recognizes individuals and couples whose generosity charts the course for a better future for all residents.

Women United

Locally established in 2018, **Women United** is a powerful, passionate network of women who influence change in our community through focused investment of their time, talent, and resources.

*Women United Leaders



The **Tocqueville Society** nationally recognizes philanthropic leaders and our most generous local donors. This philanthropic group was named by United Way for the Frenchman Alexis Charles de Tocqueville, who declared himself most impressed with Americans' generosity. The French diplomat and historian recognized the importance of voluntary action on behalf of the common good.

WOMEN UNITED

In 2024, we expanded our Wash & Read program and are now in nine laundromat sites, ensuring families have access to free, age-appropriate books that reflect the rich diversity of our community. Our partnership with Women's Money Matters saw 36 women graduate from Financial Futures, now equipped with the knowledge, confidence and tools to manage their finances and set meaningful personal goals.

In April, over 350 supporters gathered for an epic Power of the Purse event—the most successful fundraiser in United Way of Greater New Bedford history. And, we were honored to be named Best Gala by readers of SouthCoast Almanac for the third year running!

We also continued our outreach to parents and caregivers through Bright by Text, a free parenting tool that delivers expert tips, activities, events, and resources directly to subscribers' phones in both English and Spanish.

It's been a busy and impactful year, and we're gearing up for so much more!



This list acknowledges all gifts and pledges made to the 2023-2024 campaign. We have made every effort to provide a complete and accurate report that recognizes all donors. If you note errors or omissions, please accept our sincere apologies and contact us.

WORKPLACE CAMPAIGNS

Employees at companies of all sizes have the opportunity to make a difference in Greater New Bedford by making donations to United Way through employee giving campaigns. We thank each participating company for their support.

Acushnet Company	Five Star Surgical, Inc.	One SouthCoast Chamber
Alden Court Nursing Care & Rehabilitation Center	Foth-CLE Engineering Group - MA & RI	PACE
AT&T	Garmin International, Inc.	Paul & Dixon Insurance
ATI Flat Rolled Products	General Dynamics	Paychex
Atkore	Greater New Bedford Regional Vocational-Technical High School	Poyant Signs
Babbitt Steam Specialty	Hanover Insurance	Precix
Bank of America	High Point-SEMCOA	Robertson's GMC
BankFive	Illinois Tool Works Inc.	Rockland Trust Company
BayCoast Bank	JC Penney	Schaefer Marine, Inc.
Benco Dental Supply Company	Johnson & Johnson Company	Shaws/Star Market
BMO Financial Group	Joseph Abboud Mfg.	Skips Marine Supply
Bristol County Savings Bank	Lafrance Hospitality Company	Southcoast Health
Brittany Global Technologies	LifeStream	St. Anne's Credit Union
Brown Brothers Harriman	Linberg Marine	Sylvia Group
Citizens Charitable Foundation	Macy's	Takeda Pharmaceuticals
Citizens Financial Group DBA Citizens Bank	Manpower	Target
City of New Bedford	Manulife Financial	TD Bank
Coastal Financial	Maritime International	Town of Acushnet
Colonial Wholesale Beverage	MASSHIRE - Greater New Bedford Workforce Investment	Town of Dartmouth
Community Nurse Home Care	Meeting Street	Town of Fairhaven
Cornell Dubilier Electronics	Moore & Isherwood	Travelers
Costco	National Grid	Tremblay's Bus Company
Cumberland Farms (EG America)	NBCU	United Way of Greater New Bedford
Davico Mfg.	New Bedford Housing Authority	Verizon Foundation
Dennison Memorial Community Center	New Bedford Medical Investors (Oaks Nursing Home)	Webster Bank
Eastern Bank	Northstar Learning Centers	William Barnet & Son
Eversource	Old Colony Regional Voc Tech High School	YMCA Southcoast
Exelon Corporation		YWCA of Southeastern Massachusetts
Fisher & Rocha, Inc.		ZAPP Precision Strip Inc.
Five Star Manufacturing		

GIFTS, SPONSORSHIPS, AND OTHER SUPPORTS

\$50,000 +	Southcoast Health	Diana D'Agostine	First Citizens' Federal Credit Union
Acushnet Company	St. Anne's Credit Union	East Bay Building & Remodeling	Morgan Advanced Materials
BayCoast Bank	\$5,000-\$9,999	Eastern Bank	Neighborhood Auto Service
The Manton Foundation	Bilezikian Family Foundation	Excel Recycling	Paul & Dixon Insurance
Massachusetts Department of Children & Families	Claremont Companies	Folia	PricewaterhouseCoopers
SouthCoast Community Foundation	Davico Mfg.	Goodway Group	PS Gourmet Coffee
- Acushnet Foundation Fund	Eastern Bank Charitable Foundation	Guild Mortgage	Robertson's GMC
	Milestone Mortgage Solutions	JICAN Consulting	Rock Funeral Homes
\$25,000-\$49,999	Point32 Health	Mechanics Cooperative Bank	SMB Charitable Fund
BankFive	Sam Karam and Sons General Contractors	Milbury & Company	Sousa Marujo LTD
Eversource	SouthCoast Community Foundation	Neto Insurance Agency	SouthCoast Community Foundation
	- The Jake Fabian Memorial Fund	Ocean Spray Cranberries	-Milestone Gives Foundation
\$10,000-\$24,999	- Upstream Foundation Fund	Rockland Trust Company	Southcoast Insurance Group
Bank of America	Southcoast Health	\$1,000-\$2,499	Sylvia Group
Bristol County Savings Bank	Mark and Sheelagh White	Cornell Dubilier Electronics	Taunton Federal Credit Union
The Carney Family Charitable Foundation	\$2,500-\$4,999	Demoulas Market Basket Foundation	TD Charitable Foundation
Island Foundation	Cafe Mimo	Enos Home Oxygen & Medical Supplies	Vermette Enterprises
Wendy and Ken Joblon	Denell and Justin Brodeur	First Citizens Charitable Foundation	Webster Bank
The Sir Edwin & Lady Manton Fund			

IN KIND GIVING

Acushnet Company	Constantly Varied Gear	L'Oreal USA	Sharing the Harvest Community
Ahead	Exquisite Events	LMNT	Farm, a Program of YMCA Dartmouth
Blount Fine Foods	Flora	Loan Depot	Shimmer
Brahmin Leather Works	Folia	Malulani Surey	SouthCoast Almanac
Can'd Aid	Hair in Motion	Nuskin	Touchstone Crystal
Candy Apple Farm	Hannoush Jewelers	Reynolds DeWalt	Townsquare Media
Coastal Foodshed	Jonathan's Sprouts		Tremblay's Bus Company, Inc.

BOARD OF DIRECTORS

DR. SHANNA HOWELL, PhD.

Southeastern Regional Vocational Technical
High School
Vice Principal

UWGNB Chair

CHRISTOPHER FORTIER,

PharmD, FASHP, CPEL
Nephron Pharmaceuticals
President

UWGNB Vice Chair

JENNIFER OLIVIER, CPA

CliftonLarsonAllen LLP
Principal, Non-Profit

UWGNB Treasurer

JENNIFER ST. PIERRE, CPA

Bristol County Savings Bank
CFO

UWGNB Clerk

ROLAND GIROUX, ESQ.

Acushnet Company
Executive Vice President/ Chief Legal Officer

UWGNB Immediate Past Chair

NICOLE ALMEIDA

Massachusetts Bankers Association
Vice President/ Chief of Staff

STARLENE ALVES, ESQ.

Alves Law Group
Owner & Founder

HEATHER M. BONNET-HEBERT, ESQ.

Feingold Bonnet-Hebert, P.C.
Managing Shareholder

MORGAN DIAZ

Athena Health
VP of Strategy, Operations & Partnerships

JENNIFER DOWNING

New Bedford Ocean Cluster
Executive Director

FRANCINE FERGUSON

Bristol County Savings Bank
Senior Vice President/ Senior Retail
Banking Officer

MONTE FERRIS JR.

Ferris Development Corporation
Treasurer/ Vice President
Service ended June 2024

DAVID GOMES, ESQ.

UMass Dartmouth
Chief Diversity Officer/ Title IX Coordinator

DONALD HARTLEY

Ocean Point Investment Solutions
Financial Advisor

ROSEMARIE LOPES

Sylvia Group/ Alera
Senior Partner

MICHELLE LORANGER

Day One
Acting Executive Director

MATTHEW PAYETTE

BayCoast Bank
Senior Vice President/ Chief Community
Banking Officer

JACQUELINE GANNON SOMERVILLE, Ph.D., RN

Southcoast Health
Senior Vice President/ Chief Nursing Officer

RAY SUPRENANT

Davico Manufacturing
Owner/ President

NELSON TAVARES

Taunton Federal Credit Union
President/ CEO

WOMEN UNITED LEADERSHIP COUNCIL

STARLENE ALVES, ESQ.

Alves Law Group

CHERYL BARTLETT

New Bedford Community
Health

KATE CARNEY

Carney Family Charitable
Foundation

JENNIFER DOWNING

New Bedford Ocean Cluster

BETH McDEMOTT

McDemott Philanthropy, LLC
Service ended June 2024

GUELMIE SANTIAGO

Santiago Professional Services

JILL SIMOES

JICAN Consulting

NBCCC ADVISORY BOARD

ESPERANZA ALEJANDRO- BERUBE

New Bedford Housing Authority

KATLYN AUTY

Southcoast Behavioral Health

LUCY CANUEL

Massachusetts Department of
Children & Families

IVIS ESPINOZA-OZIEDO

New Bedford Resident

PAM KEUHLER PACE

NorthStar Learning Centers

RENEE LEDBETTER

Carney Family Foundation

GLENN OLIVEIRA

FDR Program Director

JASMIN VEGA

New Bedford Public Schools
(Wrap-around Services)

STAFF

MICHELLE NEVES HANTMAN

President/ CEO
mhantman@unitedwayofgnb.org

MACALYN CABRERA

Hunger Commission Coordinator
hungercommission@unitedwayofgnb.org

KRISTINE A. CUNNINGHAM

Development Manager
kcunningham@unitedwayofgnb.org

KATHERINE CRAWFORD

Chief Finance/ Human
Resource Officer
kcrawford@unitedwayofgnb.org

SAVANNAH DUARTE

Family Support Worker
sduarte@unitedwayofgnb.org

FATIMA GALARZA

School Liaison
fgalarza@unitedwayofgnb.org

VICTORIA GASELA

VP of Marketing &
Community Engagement
vgrasela@unitedwayofgnb.org

GRETCHEN HUBERT

Executive Assistant
ghubert@unitedwayofgnb.org

NICOLE KELLY

Office Assistant
nkelly@unitedwayofgnb.org

DORA LIMA

Financial Wellness Coordinator
dlima@unitedwayofgnb.org

PAULA MONTGOMERY

Women United Director
pmontgomery@unitedwayofgnb.org

DORCAS RAMIREZ PABON

Child & Family Service Clinician
dramirezpabon@unitedwayofgnb.org

AMY PILLARELLA

FRDC Program Director
apillarella@unitedwayofgnb.org

KEISHA RODRIGUEZ-GARCIA

Family Advocate, NBCCC/Patch
kgarcia@unitedwayofgnb.org

SARAH W. ROSE

Chief Impact Officer
srose@unitedwayofgnb.org

TELMA ROSA-SILVA

Family Support Worker
tsilva@unitedwayofgnb.org

JOHN SILVA

NBCCC Program Director
jsilva@unitedwayofgnb.org

LOURDES TORRES

FRDC Administrative Specialist
ltorres@unitedwayofgnb.org

IN HONOR

Jennifer Downing
Victoria Grasela
Stephanie Perry
Kevin T. Pelland
Lucy Pinhancos

IN MEMORY

Marc Allain
Joseph Arsenault
Kenneth Bock
Chris Glover
Eleanor Martin
John A. Nosul
Artur Pereira
Ruth B. Silva

IN REMEMBRANCE CHRIS GLOVER

This annual report is dedicated to Chris Glover, our former IT consultant, who for 17 years was much more than our “IT guy”—he became a true extension of our team. Chris consistently went above and beyond, demonstrating not only exceptional skill and knowledge but also remarkable patience, kindness, and professionalism. His expertise was matched only by his ability to connect with every one of us, always treating us with respect regardless of our technical abilities. Chris’s unwavering professionalism and generous spirit will forever leave a lasting impact on our organization.





128 Union Street, Suite 403
New Bedford, MA 02740
Ph: 508-994-9625
Fax: 508-994-9667
info@unitedwayofgnb.org
unitedwayofgnb.org

NONPROFIT
ORGANIZATION
U.S. POSTAGE PAID
NEW BEDFORD, MA
PERMIT NO. 156

Change Service Requested



**SUPPORT OUR WORK.
MAKE A DONATION
TODAY.**

.....

CONNECT WITH US



@unitedwayofgnb