

LIVE UNITED



2009 Report to the Community

LIVE UNITED

Join the **LIVE UNITED** Movement.

UNDERNEATH EVERYTHING WE ARE, UNDERNEATH EVERYTHING WE DO, WE ARE ALL PEOPLE. CONNECTED, INTERDEPENDENT, UNITED. AND WHEN WE REACH OUT A HAND TO ONE, WE INFLUENCE THE CONDITION OF ALL. THAT'S WHAT IT MEANS TO LIVE UNITED.

GIVE

There is no greater investment that one can make than in his or her own community. When you give to a cause you care about, you immediately become part of the collective power to create change. Every individual has a different desire and ability to give. Regardless of the amount of your contribution, every gift makes a difference.

ADVOCATE

Anyone can advocate for a better tomorrow. United Way of Greater New Bedford is advocating every day - whether it's through the programs we fund, the community initiatives we administer, or the partnerships in which we are involved. We believe that in order to build a stronger community, we must all lend our voice to advance the common good.

VOLUNTEER

Every day, ordinary people are accomplishing extraordinary things by volunteering. We all have special talents. Things we can do to help. And when we reach out a hand to one, we influence the condition of all. Whether it's reading to children, cleaning up your neighborhood, or delivering meals to homebound seniors, there are hundreds of volunteer options available every day.

GIVE ADVOCATE VOLUNTEER

Dear friends, partners and supporters:

In 2008, we made a bold statement with the launch of the Live United campaign. Many volunteers, donors, providers and beneficiaries proudly wore the t-shirt to set an example and promote our powerful message. More importantly, the message is resonating with people to come together to help advance the common good.

This past year was one of our most challenging ever for fundraising. However, difficult times demand our best performance. Due to the struggling economy, we were forced to make some serious decisions and changes to our United Way, but we feel pride in what we've accomplished and are hopeful for the future. As a staff, we are stronger and working as efficiently as possible. As an organization, we are leading the way and encouraging people to Live United to better our community.

Every year, we make progress and establish new partnerships to further our work.

We partnered with other funders to create the Summer Youth Employment Pilot Program. We increased our efforts to promote 2-1-1, a round-the-clock information and referral hotline. We continue to leverage resources to serve as a convener and a catalyst for change.

As a founding partner of the Child Abuse Prevention Alliance, we helped raise awareness of Shaken Baby Syndrome and co-sponsored a workshop to address this issue and educate providers.

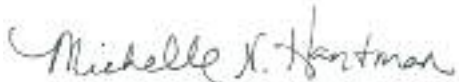
As a member of the Early Learning Consortium, we collaborated with other local organizations to promote early literacy. We provided 1,500 "Born Learning" tip pamphlets for welcome bags given to new mothers at St. Luke's Hospital.

We strengthened our work in promoting volunteerism. By partnering with the City of New Bedford on the GIVING Network, we are encouraging New Bedford residents to volunteer. We also partnered with New Bedford High School and Greater New Bedford Regional Vocational Technical High School as they launched community service initiatives for their incoming freshmen.

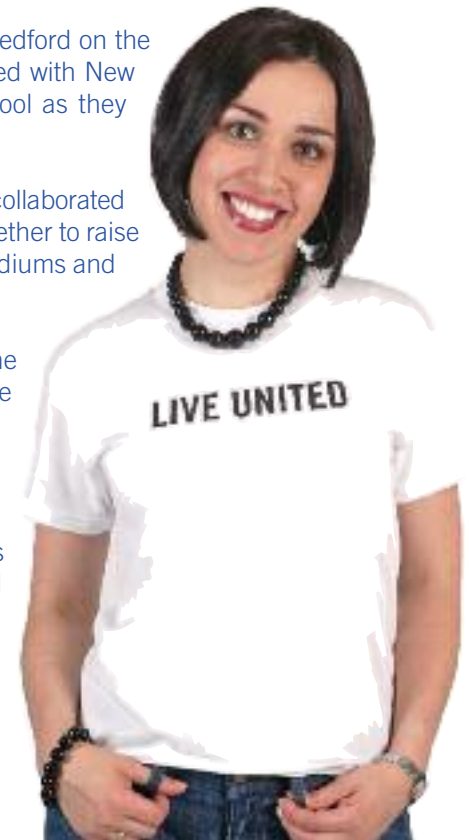
We have increased our visibility. In our continued efforts to engage a younger generation, we collaborated with other local organizations to host Be Local, an event that brought young professionals together to raise awareness of the important role they can play in the community. We continue to use new mediums and social networking to spread the word about our work and to recruit new supporters.

We are more efficient than ever before. In addition to reducing staff, we also partnered with the United Way of Greater Fall River and are now sharing a position to reduce costs. We continue to reach milestones and further our mission.

Thank you to our dedicated board and volunteers, generous donors and other countless supporters for helping us impact the community in a positive way. There is still more work to be done! As we look to the future, we know many challenges lie ahead. Live United serves as a reminder that by working together, the power is in all of us to make a difference and create change.



Michelle Neves Hantman
President



GIVE ADVOCATE VOLUNTEER

WE INVITE YOU TO BE PART OF THE CHANGE.

TOGETHER, UNITED, WE CAN INSPIRE HOPE AND, CREATE OPPORTUNITIES FOR A BETTER TOMORROW.

As the community embraced the Live United message this past year, our Board of Directors continued to focus on increasing its accountability and strengthening its infrastructure.

From ensuring we are in full compliance with United Way of America's Membership Standards to revising internal policies, we worked diligently to meet these goals and enhance our governance. We also implemented new bylaws and several key policies to monitor our efficiency.

Our fiscal stewardship and management remains strong. Donors can remain confident in knowing that the United Way board and professional staff maximize every gift to ensure critical needs are met.

More than just a slogan, Live United is making people think twice about the meaning of community service and we hope that it will continue to gain momentum.

The success of United Way of Greater New Bedford is truly the community's success. We are grateful for your generosity, loyalty and support.



LIVE UNITED



Robert Manny
VP of Operations
Princess House, Inc.
Board of Directors Chair

The notion of giving took on a whole new meaning over the past year. Each passing day revealed more and more families struggling against financial hardships and there is certainly no disputing the challenges the economy placed on our fundraising efforts. The support of committed volunteers working to encourage others to give was more important than ever.

Campaign Cabinet:

Campaign Chair, Beth Sylvia Caldwell and Campaign Cabinet members, Jill Buffington, Spherion, Roger Cabral, Bristol County Savings Bank, Andrew Guilbeault, BankFive and Chief Ronald Teachman, City of New Bedford diligently worked to support United Way's fundraising efforts.

Our United Way was also fortunate to have a dedicated and enthusiastic group of Loaned Executive volunteers who gave of their time and talents to help us coordinate employee giving campaigns at over 200 sites throughout Greater New Bedford in 2008. Each year, local businesses and nonprofits step forward to loan some of their most talented employees to the United Way's Campaign efforts. From conducting employee presentations to verifying campaign totals, each of these individuals is asked to draw upon their own unique skills enabling United Way to reach as many potential donors as possible.

This year's Loaned Executives included:

Dawn Ferreira, BankFive; Marlene Green, Sovereign Bank; Robert Horta, Bristol County Sheriff's Office; Gianni Lettieri III; Vivian Medeiros; Wendy Mendoza-Rivera, New Bedford Housing Authority, Linda Moniz, Lockheed Martin and Helen Soares, First Citizens' Federal Credit Union.



Because we strive to invest the most dollars back into the community, we are constantly assessing and improving our operational efficiency. While there are no dues paid to our United Way by partner and affiliated agencies, there is a formula for cost recovery from our annual campaign. Last year, our administrative costs were 17.5% - far below the Better Business Bureau's recommendation of up to 35% for non-profit organizations.

Partner Agency Funding

Advocacy Resource Center of Greater New Bedford (ARC)	\$34,825
American Red Cross of Massachusetts Bay	\$28,834
Boy Scouts of America, Narragansett Council	\$19,840
Boys & Girls Club of Greater New Bedford	\$84,357
Child & Family Services of New Bedford	\$50,862
Coastline Elderly Services	\$15,225
Community Nurse & Hospice Care	\$23,596
Damien's Place, Family Pantry Corporation	\$41,978
Dennison Memorial Community Center	\$46,623
Diabetes Association	\$15,388
Immigrants' Assistance Center	\$30,745
MSPCC	\$17,860
NeBCOA	\$33,135
The Nemasket Group	\$17,406
NorthStar Learning Centers	\$48,237
Positive Action Against Chemical Addiction (PAACA)	\$20,361
People Acting in Community Endeavors (PACE)	\$14,156
Salvation Army	\$67,363
Samaritans of Fall River - New Bedford	\$14,875
Schwartz Center for Children	\$71,189
Seven Hills Behavioral Health	\$11,901
Wareham Early Childhood Education & Development	\$4,968
The Women's Center	\$29,233
YMCA Southcoast	\$70,818
YWCA Southeastern Massachusetts	\$68,530
TOTAL	\$882,305

Campaigns held in 2008...

AAA • Abbot Laboratories • Acorn Manufacturing • Acushnet Company • Acushnet Public Schools • Aerovox, Inc. • AFC Cable Systems, Inc. • Alden Buick Pontiac GMC • Alden Court Nursing Home • Allegheny Ludlum Corporation • Allstate Insurance Company • Constellation Energy • American Red Cross of Massachusetts Bay • American Seafoods International • Aquapoint • Advocacy Resource Center (ARC) • AT&T • Babbitt Steam Specialty Company • Bank of America • BankFive • BankNorth • Best Buy • Better Community Living • BJ's Wholesale Club • Blue Cross Blue Shield • Boys & Girls Club of GNB • Bristol County Sheriff's Office • Brittany Dyeing & Printing Corp • Citizens Bank • Citizens-Union Savings Bank • City of New Bedford • Coastline Elderly Services, Inc. • Comcast • Command Print Solutions • Community Nurse & Hospice • Cornell Dubilier Electronics • Coyne Textile Services • Dartmouth Public Schools • Davico Mfg. • Dennison Memorial Community Center • Depuy, a Johnson & Johnson Co. • Eastern Ban • Edson International Corporation • Endeco/YSI, Inc. • Fairhaven School Department • Famous Foods • First Citizens' Federal Credit Union • Five Star Surgical • FM Global • The Gap • Gillette • Girl Scouts of Eastern Massachusetts • Greater New Bedford Regional Vocational Technical High School • Hampton Inn • Harvard Pilgrim Healthcare • High Point Treatment Center • Hodgson, Pratt & Associates • Home Depot • IBM • Immigrants Assistants Center Inc. • JC Penney • Joseph Abboud • Julius Koch USA, Inc. • Kennedy Donovan Center • Kohl's • Liberty Mutual • LL Bean • Lockheed Martin • Lowe's • Macy's • Maritime Bridge Terminal • Marshall's • Moore & Isherwood • Morgan Advanced Ceramics • Nameplates for Industry • Narragansett Council Boy Scouts of America • New Bedford Council on Addiction (NeBCOA) • New Bedford Child & Family Services • Nemasket Group • New Bedford Area Chamber of Commerce • New Bedford Credit Union • New Bedford Housing Authority • New Bedford Medical Associates • New Bedford Public Schools • New Bedford Rehabilitation Hospital • The Women's Center, Inc. • New Directions • New England Plastics Corp. • NorthStar Learning Center • NSTAR • Old Colony Regional Vocational Technical High School • Our Lady's Haven • P.A.C.E Inc. • PAACA • Pencils, Inc. • Polyneer • Poyant's Signs Inc. • Precix • Raytheon • Reynolds DeWalt • Robertson's GMC • Rockland Trust • Rosenfiled Raymon Pielech PC • Schaefer Marine • Schwartz Center for Children • Sensata • Seven Hills Behavioral Health • Shaw's Supermarket's • Skip's Marine • Southcoast Hospital Group • South Coast Media Group • Southern Mass Credit Union • Sovereign Bank • Staples • SteppingStone • Stop & Shop • Sylvia & Company Insurance Agency, Inc. • Symmetry Medical • T.J.Maxx • Target • The Oaks • The Salvation Army • The Samaritans • CBIZ TOFIAS PC • Town of Acushnet • Town of Dartmouth • Town of Fairhaven • Town of Wareham • Tremblay's Bus Co. • UPS • Veolia Water • Verizon • Wal-Mart • Wareham Early Childhood Education • Webster Bank NA • Work Inc. • YMCA Southcoast • YWCA Southeastern MA • Zapp, USA

Our Top Five Contributors...

*combined employee and corporate giving

LOCKHEED MARTIN



SOUTHCOAST

HOSPITALS GROUP

Charlton • St. Luke's • Tobey

www.southcoast.org

ACUSHNET COMPANY



Sovereign Bank

GIVE

Campaign Funding

Partner Agencies	\$882,305
Community Building Mini-Grants	\$30,000
Hunger Commision	\$20,000
Volunteer Solutions	\$3,000
MA 211	\$5,266
NBCCC Foster Children	\$2,165
Affiliated agencies - designations	\$17,571
Non-affiliated agencies - designations	\$6,243
Other United Ways	\$2,537
Total	\$969,085

Other Funding for Special Initiatives and Programs

\$285,331

TOTAL COMMUNITY INVESTMENT **\$1,254,416**



In-kind media sponsorship generously provided throughout the year by:

SouthCoast Media Group

The Standard-Times • SouthCoastToday.com • SouthCoast Printing
The Advertiser • The Chronicle • Fall River Spirit • Middleboro Gazette • The Spectator
The New England Business Bulletin • The Gateway

A special thank you to Andrew T. Gallagher Studios for providing the Live United photography.

The idea of giving is one that members of United Way's Navigator Society take to heart. While every gift makes a difference, we recognize the commitment of those who have contributed \$1,000 or more annually. By making a leadership commitment to United Way, these individuals go the extra mile so that our community can grow and thrive.



Navigator Society Members • \$1,000 - \$1,499

Carolina Africano, Gr. Boston Legal Services, Inc. • Edward Arsenault, Acushnet Company • Toni Athans, Lockheed Martin • Bret Bokelkamp, Sovereign Bank • William Burke, Acushnet Company • Joseph Burke, P & G Gillette Company • Mr. & Mrs. Beth & Kevin Caldwell, Sylvia & Company Insurance Agency, Inc. • Mr. & Mrs. John and Lisa Calnan, Citizens Bank • John Catterall, City of New Bedford • Dr. Paul Chervinsky, New Bedford • Mark E. Cronin, Symmetry Medical • Robert Dumas, GNBVOC-TECH • John Duryea, Rochester • Ralph Eustis, Mattapoisett • Henry Fortin, GNBVOC-TECH • James Fortin, Acushnet Company • Nelson Gifford, Marion • Roland Giroux, Acushnet Company • Sarah Gonet, United Way of Greater New Bedford • Michael Goulart, Shaw's • Christopher Hodgson, North Dartmouth • Mathew Insana, Rockland Trust • John Jackson, Child & Family Services • Steve Kearney, Rockland Trust • Michael Kelly, Acushnet Company • Michael Kramer, Acushnet Company • Sarah B. Lamothe, Verizon • Mayor Scott Lang, City of New Bedford • Frederick Langevin, Acushnet Company • Daniel Lopes, Aerovox • Jorge Lopes, Depuy, a Johnson & Johnson Company • Christopher Louro, UPS • David Maher, Lockheed Martin • Robert Manny, Princess House • Mark Mareiro, Lockheed Martin • Mr. & Mrs. William Markey, New Bedford • Mr. & Mrs. Howard Marshall, FM Global • Mary Marshall, GNBVOC-TECH • Jenna McDonald, AFC Cable Systems • Nancy McFadden, Marion • Sylvia McLaughlin, P & G Gillette Company • David Medeiros, Sovereign Bank • Bernard Mitchell, Lockheed Martin • Nelson Ostiguy, City of New Bedford • Charles Paradis, Lockheed Martin • Mr. & Mrs. James W. & Margaret H. Perkins, Cambridge • Debbie Pickup, St. Luke's Hospital • Marilyn and Robert Pielech, Cumberland RI/ Raymon Pielech Zexter PC • Sean Reardon, Sensata • Orren Robbins, Dartmouth • Kevin Rodman Conare, Kennedy-Donovan Center • Gail Rodrigues, Sovereign Bank • Mark Rogers, Jr., Acushnet Company • Manuel Rose, III, City of New Bedford • George Ross, South Dartmouth • Gary Schuyler, YMCA Southcoast • Alan Sequiera, Lockheed Martin • James Shaw, Lockheed Martin • Lisa Shea, NSTAR • Stephen Stabile, Lockheed Martin • Maureen Sylvia Armstrong, Sylvia & Company Insurance Agency, Inc. • David Talty, UPS • Emily Viera, Lockheed Martin • Mark Whalen, Lockheed Martin • James White, Sovereign Bank • Shawn Yoder, Lockheed Martin

\$1,500 - \$2,499

Arthur J. Kelly III, New Bedford • Mr. Bruce Lemieux, Sovereign Bank • Michael McDermott, Acushnet Company • Joseph J. Nauman, Acushnet Company • Joseph Rappisi, Lockheed Martin • Francis Rice, UPS • Michael Sitarz, Julius Koch • Waterson Family Foundation

\$2,500 - \$4,999

Joseph Blais, Lockheed Martin • Michelle & Jason Hantman, United Way of Greater New Bedford/Bank of America • Mr. & Mrs. Albert Merck, Mattapoisett • Steve & Dolly Sharek, Dartmouth • Mr. Richard Toomey, Sovereign Bank • Sidney Weinberg, Marion

\$5,000 - \$9,999

Rev. & Mrs. Brendan Griswold, South Dartmouth • Mr. & Mrs. William Walsh, Marion

Alexis de Tocqueville Society Ordre d'Liberte \$25,000 - \$49,999

Anonymous Donor

Special note: We have reviewed carefully all gifts made to United Way of Greater New Bedford to ensure that each gift is properly recognized. The Navigator Society List acknowledges all gifts made to the 2008 campaign. Occasionally, despite our best efforts, or due to company confidentiality, a name may be omitted or listed incorrectly. If we have made mistakes, we sincerely apologize. Please alert us to such errors by contacting the United Way office at 508-994-9625 or info@unitedwayofgnb.org. Please note that we make every effort to follow donors' preferences when compiling the Navigator Society List. If you would prefer to have your name listed differently in the future, please let us know.

Our United Way is governed by an extraordinary group of community leaders who generously volunteer their time and talents to lead this organization. These individuals represent a broad cross section of the community and are dedicated to advancing the common good in Greater New Bedford. Board members may serve three-year terms, while all officers and standing committee chairs are appointed annually. The Board of Directors usually meets four to six times during the year at a location graciously hosted by Bank of America.

Board of Directors

Robert Manny, Princess House, Inc. (Chair of the Board) • Dennis Galvam, NSTAR (Vice Chair) • Arthur Kelly (Immediate Past Chair) • Robert Pielech, CPA, Raymon Pielech Zexter PC (Treasurer) • Orren Robbins (Clerk) • Atty. Jane Pineau (Of Counsel) • Hershel Alpert, Alpert Consulting • Pamela Cruz, MA Department of Children and Families • David Fortin, Media Image Productions, Inc. • Patrick Gannon, Southcoast Hospitals Group (Service ended 10/08) • Frances Fuller, RN, MS CHE, Southcoast Hospitals Group • Roland A. Giroux, Acushnet Company • Andrew Guilbeault, BankFive • Christopher Hodgson, Coastal Financial Services • Mathew Insana, Rockland Trust • Sarah Lamothe, Verizon • Jenna McDonald, AFC Cable Systems, Inc. • Nancy McFadden, Bridgewater State College • Atty. Joe Michaud • Michele Pratt, CPA, Hodgson, Pratt & Associates • Gary Schuyler, YMCA Southcoast (Service ended 10/08) • Michael Shea, GNBVOC-TECH • Edward Sweeney • Emily Viera, Lockheed Martin • Dr. Vanessa M. Ferreira Williams, Mattapoissett Council on Aging

Honorary Board of Directors

Carolyn Burnham, Dartmouth • Joel Burns, South Dartmouth • Norman Cartmill, Marion • John Day, South Dartmouth • J. Richard Early, Fairhaven • John Farnham, Marion • Manuel Fernandes, Acushnet • Glen Johnson, New Bedford • John Linehan, New Bedford • R.F. MacDonald, Marion • Dr. Edward Mackler, New Bedford • James Mathes, South Dartmouth • John Moore, Dartmouth • Domenick Nicolaci, Fairhaven • Norma Olivier, South Dartmouth • Stephen Prescott, South Dartmouth • Stuart Richardson, Marion • George Ripley, New Bedford • Mary Schwartz, North Dartmouth • Calvin Siegal, South Dartmouth • Atty. Howard Young, New Bedford • Richard B. Young, Mattapoissett



GIVE... to the youth in our community

Summer Fund and the New Bedford Youth Employment Pilot Program

United Way recognizes that one of the most fundamental ways to give back to a community is by investing in our children. This past year, United Way of Greater New Bedford's Summer Fund Program awarded a total of \$26,620 to local summer camps and enrichment programs. The grants, supported by the Island Foundation and Community Foundation of Southeastern MA – Acushnet Foundation Fund, as well as individual donors, were used to provide scholarships to economically disadvantaged and physically disabled children throughout Greater New Bedford.



Each year since its inception in 1993, Summer Fund, chaired by Senator Mark Montigny, has consistently provided thousands of youth with access to summer programs that allow them to experience everything from the arts and sciences to sailing and horticulture. The simple fact is though, that many youth who benefit from these programs eventually age out and are left with few alternatives for their summers. The development of the New Bedford Youth Employment Pilot Program was intended to offer some of these youth meaningful employment and mentoring opportunities where they could apply their skills to working with younger youth. By giving our youth the tools and opportunities they need to succeed we are giving them the keys to a bright future.

With support from the Island Foundation, Bilezikian Family Foundation, Patrick Carney Foundation, Upstream Foundation and Rainy Day Fund at the Community Foundation of Southeastern Massachusetts, the New Bedford Youth Employment Pilot Program provided 28 youth with employment opportunities through \$73,000 in funding.

Summer Fund

Advocacy Resource Center of GNB	\$1,500
Artworks! Partners for the Arts & Community	\$3,000
Community Boating Center, Inc.	\$3,000
Girl Scouts of Eastern Massachusetts	\$1,350
Gleason Family YMCA - Camp Nep-In-Nae	\$1,200
Narragansett Council, Boy Scouts of America	\$2,250
New Bedford Art Museum	\$3,500
New Bedford Prevention Partnership	\$1,000
Trips for Kids New Bedford, Inc.	\$1,520
YMCA Dartmouth - Camp Metacomet	\$1,100
YMCA Mattapoissett - Camp Massasoit	\$2,700
YMCA New Bedford - Camp Frederick Douglas	\$1,500
YWCA Southeastern Massachusetts	\$3,000
Total:	\$26,620

Youth Employment Program

3rd EyE Unlimited	\$6,000
Boys & Girls Club	\$6,000
Community Boating Center	\$6,000
Dennison Memorial Community Center	\$3,200
Hunger Commission	\$4,500
Immigrants' Assistance Center	\$3,000
SEMAP	\$3,000
The Trustees of Reservations	\$5,984
Treatment on Demand, Inc.	\$6,000
Trips for Kids New Bedford	\$2,000
YMCA/Dartmouth	\$5,600
YMCA/Mattapoissett	\$5,600
YMCA/New Bedford	\$6,000
YouthBuild	\$5,900
YWCA/Girls Giving and Growing	\$1,960
YWCA/ywkids School Age	\$3,031
Child Care Program	
Total:	\$73,775

Community Building Mini-Grants Program

Last year, United Way helped 28 local all-volunteer groups advocate for change in our community by awarding a total of \$31,181 through our Community Building Mini-Grants Program.

The Mini-Grants program provides financial and technical support for groups that want to build our local community. Funded projects address a broad spectrum of interests and concerns – including youth, seniors, public safety, nonviolence, environment, performing arts, advocacy, disabilities, community gardens and neighborhood events.

Mini-Grants is also the only local grant program that advocates for grassroots groups by providing them with the opportunity to collaborate, leverage resources and learn new skills. Our Community Builders Resource Library is an equipment-lending center that enables current and past grantees to borrow larger, more costly items, or items needed for special events, that wouldn't normally be funded through a mini-grant.

2009 Mini-Grants recipients:

21 FrienDS \$1,500 – Acushnet Classic Ensemble (ACE) \$2,000 – Bullard Street Neighborhood Association \$221 – Busy Hands & Loving Hearts \$800 – Community Breakfast Program \$1,000 – Cove Street Neighborhood Association \$606 – DeMello School PTO \$870 – Fairhaven Association for Music in Education (FAME) \$250 – Fairhaven Sustainability/Community Garden Committee \$1,240 – First Fridays New Bedford \$1,000 – Friends of Old Rochester Regional Drama \$1,000 – Friends of the Wareham Community Pathway \$763 – Grandparents Raising Grandchildren \$1,500 – Jireh Swift Elementary PTO \$500 – Kids That Grow \$1,000 – MA Children's Relief \$1,425 – Martha Briggs Educational Club, Inc. \$1,000 – Miss Acushnet Sesquicentennial Committee \$1,000 – MOMS Club of Fairhaven \$750 – Monte's Park Basketball League \$1,784 – Onset Community Crime Watch \$1,740 – Safe Zones \$2,000 – Serenity Gardens \$1,300 – Southcoast Community Gardens Coalition \$650 – Team Builders, Inc. \$1,482 – The Baby Project \$2,000 – The Spiritual Warrior Society \$1,400 – Voices in Time \$400



The Community Building Mini-Grants Program received support in 2009 from the United Way Annual Campaign, Island Foundation, Bilezikian Family Foundation, Community Foundation of Southeastern Massachusetts - Nancy Kurtz, Upstream Foundation, Rotary Club of New Bedford and miscellaneous donations throughout the year. The Community Economic Development Center of Southeastern Massachusetts is a founding partner and provides in-kind program support year round.

Hunger Commission of Southeastern MA

Recognizing that food insecurity is one of our area's most critical needs, the United Way Hunger Commission of Southeastern Massachusetts works tirelessly to advocate for those who need it most.

By working with local businesses, individuals, volunteer groups and emergency food programs, the Hunger Commission coordinates food distribution to nearly 50 emergency food programs throughout Bristol County. In addition, we serve as the local administrator of the Emergency Food and Shelter Program (EFSP) and partner with the National Association of Letter Carriers and the US Postal Service for the Letter Carriers' Food Drive, the largest one-day food drive in the country. The Hunger Commission also regularly advocates for childhood nutrition statewide to ensure that every child has the opportunity to thrive.

Last year, the Hunger Commission received support from Bergie's Seafood, Helping Hands, Maritime Terminal, Nissen Bread, Sharing the Harvest Community Farm, Shaw's Supermarkets, Sid Wainer & Son, Starbucks, Stop & Shop and Tempest Fisheries. The program also receives support from Bilezikian Family Foundation, City of New Bedford Community Development Block Grant, Island Foundation, Patrick Carney Foundation, Project Bread and the United Way Campaign.



2008 Hunger Commission Distribution Sites:

American Red Cross • Ascension Church • Coastline Elderly Services • Catholic Social Services • Citizens for Citizens • Damien's Pantry • Harmony House • Heritage House • Home of Hope • Immigrants' Assistance Center • Market Ministries • M.O. Food = L.I.F.E. Pantry • PACE • Reflections • St. Anthony's Church • St. Martin's Church • Salvation Army • Steppingstone • TSS Seven Hills Behavioral Health • Veterans' Association of Bristol County • Veterans' Transition House • YWCA Southeastern Massachusetts



Mass 2-1-1

We believe that above all, individuals have the right to advocate for themselves. In 2008, our United Way introduced a new program that makes it easier for local people to find the resources they need.

Mass 2-1-1 is an information and referral line that provides free, confidential information to people seeking support services in non-emergency situations, 24 hours a day, 7 days a week. 2-1-1 connects individuals or families seeking services – such as child and elder care, substance abuse treatment or emergency food and shelter – and the appropriate community-based organizations and government agencies.

MASS 2-1-1 is a statewide collaboration of local United Ways and the Massachusetts Association of Information and Referral Specialists (MAIRS). The goal of the program is to encourage prevention and foster self-sufficiency by making services easier to access, as well as help reduce the number of non-emergency calls inappropriately made to 9-1-1.

Although this was the first year that 2-1-1 was promoted locally, Mass 2-1-1 is a statewide program that has existed since 2006. Over the past year, the call volume from Greater New Bedford has increased by 120%, demonstrating the substantial need for such a service in our area. More information about the program is available at www.mass211help.org.



Volunteer Solutions

When everyone in a community volunteers, everyone wins. As such, we are dedicated to helping all individuals – regardless of their skills or resources – get involved to help strengthen our community.

Volunteer Solutions is a free online service that connects potential volunteers with local agencies in need of support. Accessible through the United Way website, the database lists over 100 opportunities and provides users with an array of search options, such as area of interest, zip code or date.

The program also features a Board Connections component which matches potential board members with nonprofits that have openings.

NBHS / GNBVOC-TECH Collaboration

We believe that a life-long commitment to service can never start too soon. Last year United Way partnered with New Bedford High School and GNBVOC-TECH in an effort to promote volunteerism among local youth. United Way staff and volunteers conducted trainings on Volunteer Solutions to help approximately 800 freshmen fulfill a community service pilot program requirement. Students also learned about the benefits of volunteerism and the need for service in the community.

We also partnered with New Bedford High School on their “Change – It Starts with You” Lamppost Banner Project. The banners, which were designed by students from the Twilight School Program, display the six pillars of character and are meant to inspire students and community members to be catalysts for positive change.



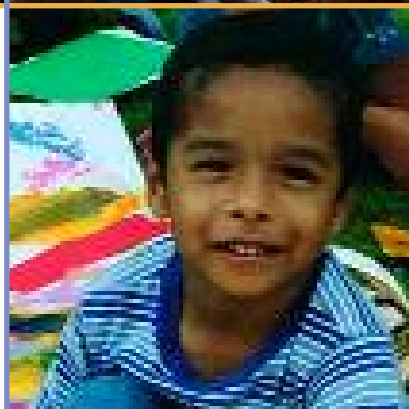
VOLUNTEER

Days of Caring

The spirit of volunteerism was also alive and well during last year's Days of Caring, which called on 250 volunteers from local businesses and schools to assist nonprofits with various projects such as landscaping, painting, stocking food pantries and much more. Each year, the Days of Caring provide thousands of dollars in much needed volunteer support to participating agencies.

The Day of Caring and the Youth Day of Caring were sponsored by:







This year's Clambake was
generously
sponsored by:





LIVE UNITED

Left to right: Lisa Calvano, CPA, Director of Finance & Administration • Michelle Hantman, President • Claudia Kirk, Program Director, Community Building Mini-Grants Program • Bill Shell, Program Director, Hunger Commission of Southeastern Massachusetts • Caroline Cuccia, Director of Marketing & Public Relations • Sarah Gonet, Vice President of Resource Development





United Way of Greater New Bedford

105 William Street • P.O. Box 7823

New Bedford, MA 02740-7823

Tel: 508.994.9625 • Fax: 508.994.9667

www.unitedwayofgnb.org

A 501C3 Nonprofit Organization